



Inventaire de la flore vasculaire du Limousin

Bordereau de relevé - Version 2016 / 01

Réf. maille :

N° relevé :

DATE (OU PÉRIODE) : / / AU / /

N° CBNMC

OBSERVATEUR(S) :

&
 &

SITUATION

Commune :

Localisation :

Joindre impérativement un pointage de votre relevé sur une carte

Pointage GPS :

DONNÉES STATIONNELLES

Roche mère :

Altitude (m) :

inf. :

sup. :

Pente moyenne (°) :

Exposition : N NO NE S SO SE O E

MILIEUX

1 Zones urbaines

- 1 Murs et bâtiments
- 2 Parcs et jardins
- 3 Zones industrielles, friches rudérales, décombres et dépotoirs
- 4 Cimetières
- 5 Autres (préciser : _____)

2 Routes, chemins, voies ferrées, carrières

- 1 Bords de routes et de chemins (bermes, fossés, talus)
- 2 Voies ferrées et dépendances ferroviaires
- 3 Carrières
- 4 Autres (préciser : _____)

3 Cultures, jachères, friches

- 1 Céréales, protéagineux et oléagineux
- 2 Cultures sarclées et maraîchères
- 3 Autres cultures annuelles (préciser : _____)
- 4 Vignes
- 5 Vergers
- 6 Jachères et friches post-culturelles
- 7 Autres (préciser : _____)

4 Eaux et bordures aquatiques

- 1 Sources et ruisselets
- 2 Eaux courantes (ruisseaux, rivières et fleuves)
- 3 Eaux stagnantes (mares, étangs, lacs...)
- 4 Bordures aquatiques basses
- 5 Bordures aquatiques hautes (roselières, magnocariçaies...)
- 6 Sables et graviers des cours d'eau
- 7 Fossés, déversoirs et canaux
- 8 Autres (préciser : _____)

5 Tourbières, prairies humides et mégaphorbiaies

- 1 Bas-marais, tourbières plates et de transition
- 2 Tourbières hautes et landes tourbeuses
- 3 Prairies humides
- 4 Mégaphorbiaies collinéennes à montagnardes
- 5 Autres (préciser : _____)

6 Pelouses et prairies sèches à mésophiles

- 1 Pelouses calcicoles et basiphiles
- 2 Nardaies et pelouses acidiphiles
- 3 Prairies de fauche
- 4 Prairies pâturées
- 5 Autres (préciser : _____)

7 Landes, fourrés et haies

- 1 Landes collinéennes et montagnardes
- 2 Ourlets herbacés de recolonisation pastorale
- 3 Fourrés
- 4 Haies
- 5 Autres (préciser : _____)

8 Lisières et forêts

- 1 Forêts riveraines et alluviales
- 2 Forêts de ravins
- 3 Chênaies, charmaies et autres forêts collinéennes
- 4 Hêtraies, sapinières et autres forêts montagnardes
- 5 Pinèdes
- 6 Plantations (préciser : _____)
- 7 Lisières, clairières et coupes
- 8 Pistes, laies et layons forestiers
- 9 Autres (préciser : _____)

9 Rochers, éboulis et sables

- 1 Rochers, dalles et falaises
- 2 Éboulis
- 3 Sables et arènes
- 4 Autres (préciser : _____)

REMARQUES DIVERSES

TAXONS SUPPLÉMENTAIRES

| Nom | Milieux | Effectif* | Indigénat | *Échelle d'effectif |
|-----|---------|-----------|-----------|----------------------|
| | | | | De 1 à 9 ind. : 1 |
| | | | | De 10 à 99 ind. : 2 |
| | | | | Plus de 100 ind. : 3 |
| | | | | |
| | | | | |
| | | | | |

| | | | | | | | | | |
|--|---|--|---|--|---|---|---|---|---|
| ABIES ○ alba ○ grandis ○ nordman | AILANT ○ <i>altissi</i> | ○ <i>retrofil</i> | ANTINO ○ <i>agrost</i> ○ (<i>agros</i>) | ASPHOD ○ albus ○ (albus) | ○ [rivula ○ [vulgar | ○ (erecta ○ <i>inermi</i> ○ (<i>inermi</i>) ○ gr. ramosa ○ l beneke ○ l ramosa ○ l (ramosa) | ○ (glomer ○ patula ○ [patula ○ <i>persici</i> ○ rapu'lus ○ rotundi ○ (rotund ○ trachel ○ (trache | ○ panicul ○ (panicu ○ paucifi ○ pendula ○ pilosa ○ pilulif ○ (piluli ○ <i>praecox</i> ○ <i>pseudoc</i> ○ <i>pulicar</i> ○ <i>remota</i> ○ <i>riparia</i> ○ rostrat ○ gr. spicat ○ l pairae ○ l spicata ○ (vulgar ○ sylvati ○ (sylvat ○ <i>tomento</i> ○ <i>umbrosa</i> ○ <i>lumbros</i> ○ vesicar ○ vulpina | CERA'CAP ○ clavicu |
| ABUTIL ○ theophr | AIRA ○ caryoph ○ multie ○ praecox | AMELAN ○ ovalis ○ (ovalis) | ANTIRR ○ majus ○ [majus | ASPLEN ○ adiantu ○ [adiant ○ [<i>silesi</i> ○ cetera ○ forezie ○ obovat ○ (billot ○ ruta-mu ○ (ruta-m ○ scolop ○ septent ○ (septen ○ trichom ○ (<i>pachyr</i> ○ (quadri ○ (tricho ○ x(lusati ○ xaltern ○ x(altern ○ x(heufie ○ xsleep ○ x(sleepi | BERBER ○ aquifo ○ vulgari | ○ gr. comm ○ l commuta ○ l (commut ○ l racemos ○ hordeac ○ (hordea ○ (longip ○ (mollif ○ secalin ○ [glabra ○ [pubesc ○ [<i>squarr</i> ○ [<i>squarr</i> | CAPSEL ○ bursa-p ○ (bursa- ○ (rubell ○ x(gracil | CARDAM ○ <i>amara</i> ○ (<i>amara</i>) ○ dentat ○ flexuos ○ heptaph ○ hirsuta ○ impatie ○ pratens | CERAST ○ <i>arvense</i> ○ (<i>arvens</i>) ○ (<i>strict</i>) ○ brachyp ○ (brachy ○ fontanu ○ (vulgar ○ glomera ○ gr. pumi ○ l glutino ○ l pilulum ○ l semidec ○ <i>tomento</i> |
| ACER ○ campest ○ monspes ○ <i>negundo</i> ○ platano ○ pseudop ○ xbornm | AJUGA ○ <i>chamaep</i> ○ (<i>chamae</i>) ○ <i>geneven</i> ○ <i>pyramid</i> | AMORPH ○ <i>frutico</i> | APERA ○ interr ○ spica-v ○ (spica-v | BERTER ○ <i>incana</i> | BETULA ○ pendula ○ pubesc ○ [glabra ○ [pubesc ○ xaurata | BROMUS ○ <i>arvensi</i> ○ (<i>arvens</i>) ○ gr. comm ○ l commuta ○ l (commut ○ l racemos ○ hordeac ○ (hordea ○ (longip ○ (mollif ○ secalin ○ [<i>squarr</i> ○ [<i>squarr</i> | BRUSS ○ papyri | CARDUU ○ crispus ○ (multif ○ <i>nigresc</i> ○ (<i>vivari</i>) ○ (<i>nutans</i>) ○ (<i>nutans</i>) ○ <i>pycnoc</i> ○ (<i>pycnoc</i>) ○ <i>tenuifl</i> | CERAST ○ <i>arvense</i> ○ (<i>arvens</i>) ○ (<i>strict</i>) ○ brachyp ○ (brachy ○ fontanu ○ (vulgar ○ glomera ○ gr. pumi ○ l glutino ○ l pilulum ○ l semidec ○ <i>tomento</i> |
| ACHILL ○ millefo ○ <i>ptarmic</i> ○ (<i>ptarmi</i>) | ALCEA ○ rosea | ANACAM ○ coriopho ○ (corioph ○ fragra ○ [<i>laxiflo</i> ○ morio ○ (morio ○ (picta ○ palust ○ pyramid ○ [pyrami | APHANE ○ gr. arvens ○ l arvensi ○ l australi | BETONI ○ erecta ○ offici ○ (offici | BIDENS ○ cernua ○ (<i>frondos</i>) ○ <i>radiata</i> ○ tripart ○ (tripar | BRYONI ○ cretic ○ (dioica | CERAST ○ <i>arvense</i> ○ (<i>arvens</i>) ○ (<i>strict</i>) ○ brachyp ○ (brachy ○ fontanu ○ (vulgar ○ glomera ○ gr. pumi ○ l glutino ○ l pilulum ○ l semidec ○ <i>tomento</i> | CERCIS ○ siliqua | |
| ACONIT ○ lycocto ○ (neapol ○ napellu ○ (vulgar | ALCHEM ○ sect. Alchem ○ gr. hybr ○ l filicau ○ l glauces ○ gr. vulg ○ l coriace ○ l glabra ○ l xanthoc ○ sect. Alpina ○ l saxatil | ANDROM ○ polifol | APONOG ○ <i>distac</i> | BIDENS ○ cernua ○ (<i>frondos</i>) ○ <i>radiata</i> ○ tripart ○ (tripar | BUDDLE ○ <i>davidii</i> | BUNIAS ○ erucago | CERAST ○ <i>arvense</i> ○ (<i>arvens</i>) ○ (<i>strict</i>) ○ brachyp ○ (brachy ○ fontanu ○ (vulgar ○ glomera ○ gr. pumi ○ l glutino ○ l pilulum ○ l semidec ○ <i>tomento</i> | CERVAR ○ rivini | |
| ACTAEA ○ spicata | ALISMA ○ [<i>lanceol</i> ○ plantag | ANDRYA ○ integri | ASTRAG ○ <i>glycyph</i> | BISCUT ○ gr. lima ○ l <i>graniti</i> ○ l <i>lima</i> | BUGLOS ○ <i>arvens</i> ○ (<i>arvens</i>) ○ <i>purpur</i> | CERAST ○ <i>arvense</i> ○ (<i>arvens</i>) ○ (<i>strict</i>) ○ brachyp ○ (brachy ○ fontanu ○ (vulgar ○ glomera ○ gr. pumi ○ l glutino ○ l pilulum ○ l semidec ○ <i>tomento</i> | CERVAR ○ rivini | | |
| ACTINI ○ delici | ALLIAR ○ petiola | ANEMON ○ nemoros ○ ranuncu ○ (ranunc | ASTRAN ○ major ○ (major | BUNIAS ○ erucago | BUDDLE ○ <i>davidii</i> | CERAST ○ <i>arvense</i> ○ (<i>arvens</i>) ○ (<i>strict</i>) ○ brachyp ○ (brachy ○ fontanu ○ (vulgar ○ glomera ○ gr. pumi ○ l glutino ○ l pilulum ○ l semidec ○ <i>tomento</i> | CERVAR ○ rivini | | |
| ADENOC ○ <i>complic</i> ○ (<i>parvif</i>) | ALLIUM ○ ericeto ○ flavum ○ longis ○ lusitan ○ olerace ○ sphaero ○ [desegl ○ [sphaer ○ ursinum ○ <i>victori</i> ○ vineale | ANGELI ○ sylvest ○ (bernar ○ (sylves | ATHYRI ○ filix-f | BUNIAS ○ erucago | BUDDLE ○ <i>davidii</i> | CERAST ○ <i>arvense</i> ○ (<i>arvens</i>) ○ (<i>strict</i>) ○ brachyp ○ (brachy ○ fontanu ○ (vulgar ○ glomera ○ gr. pumi ○ l glutino ○ l pilulum ○ l semidec ○ <i>tomento</i> | CERVAR ○ rivini | | |
| ADENOS ○ alliaria | ALISMA ○ [<i>lanceol</i> ○ plantag | ANEMON ○ nemoros ○ ranuncu ○ (ranunc | ATOCIO ○ <i>armeri</i> | BUNIAS ○ erucago | BUDDLE ○ <i>davidii</i> | CERAST ○ <i>arvense</i> ○ (<i>arvens</i>) ○ (<i>strict</i>) ○ brachyp ○ (brachy ○ fontanu ○ (vulgar ○ glomera ○ gr. pumi ○ l glutino ○ l pilulum ○ l semidec ○ <i>tomento</i> | CERVAR ○ rivini | | |
| ADIAN ○ capillu | ALISMA ○ [<i>lanceol</i> ○ plantag | ANEMON ○ nemoros ○ ranuncu ○ (ranunc | ATRIPL ○ patula ○ prostra | BUNIAS ○ erucago | BUDDLE ○ <i>davidii</i> | CERAST ○ <i>arvense</i> ○ (<i>arvens</i>) ○ (<i>strict</i>) ○ brachyp ○ (brachy ○ fontanu ○ (vulgar ○ glomera ○ gr. pumi ○ l glutino ○ l pilulum ○ l semidec ○ <i>tomento</i> | CERVAR ○ rivini | | |
| ADONIS ○ aestiva ○ annua | ALISMA ○ [<i>lanceol</i> ○ plantag | ANEMON ○ nemoros ○ ranuncu ○ (ranunc | ATROPA ○ <i>bellado</i> | BUNIAS ○ erucago | BUDDLE ○ <i>davidii</i> | CERAST ○ <i>arvense</i> ○ (<i>arvens</i>) ○ (<i>strict</i>) ○ brachyp ○ (brachy ○ fontanu ○ (vulgar ○ glomera ○ gr. pumi ○ l glutino ○ l pilulum ○ l semidec ○ <i>tomento</i> | CERVAR ○ rivini | | |
| ADOXA ○ moschat | ALISMA ○ [<i>lanceol</i> ○ plantag | ANEMON ○ nemoros ○ ranuncu ○ (ranunc | AURINI ○ <i>saxatil</i> ○ (<i>saxati</i>) | BUNIAS ○ erucago | BUDDLE ○ <i>davidii</i> | CERAST ○ <i>arvense</i> ○ (<i>arvens</i>) ○ (<i>strict</i>) ○ brachyp ○ (brachy ○ fontanu ○ (vulgar ○ glomera ○ gr. pumi ○ l glutino ○ l pilulum ○ l semidec ○ <i>tomento</i> | CERVAR ○ rivini | | |
| AEGILO ○ <i>genicu</i> | ALISMA ○ [<i>lanceol</i> ○ plantag | ANEMON ○ nemoros ○ ranuncu ○ (ranunc | AVENA ○ barbata ○ (barbat ○ fatua ○ (fatua ○ sativa ○ (sativa ○ (steril ○ (steril ○ strigos | BUNIAS ○ erucago | BUDDLE ○ <i>davidii</i> | CERAST ○ <i>arvense</i> ○ (<i>arvens</i>) ○ (<i>strict</i>) ○ brachyp ○ (brachy ○ fontanu ○ (vulgar ○ glomera ○ gr. pumi ○ l glutino ○ l pilulum ○ l semidec ○ <i>tomento</i> | CERVAR ○ rivini | | |
| AEGOPO ○ podagra | ALISMA ○ [<i>lanceol</i> ○ plantag | ANEMON ○ nemoros ○ ranuncu ○ (ranunc | AVENUL ○ pubesce ○ (pubesc | BUNIAS ○ erucago | BUDDLE ○ <i>davidii</i> | CERAST ○ <i>arvense</i> ○ (<i>arvens</i>) ○ (<i>strict</i>) ○ brachyp ○ (brachy ○ fontanu ○ (vulgar ○ glomera ○ gr. pumi ○ l glutino ○ l pilulum ○ l semidec ○ <i>tomento</i> | CERVAR ○ rivini | | |
| AESCUL ○ hippoca | ALISMA ○ [<i>lanceol</i> ○ plantag | ANEMON ○ nemoros ○ ranuncu ○ (ranunc | ARISTA ○ <i>setace</i> | BUNIAS ○ erucago | BUDDLE ○ <i>davidii</i> | CERAST ○ <i>arvense</i> ○ (<i>arvens</i>) ○ (<i>strict</i>) ○ brachyp ○ (brachy ○ fontanu ○ (vulgar ○ glomera ○ gr. pumi ○ l glutino ○ l pilulum ○ l semidec ○ <i>tomento</i> | CERVAR ○ rivini | | |
| AETHUS ○ cynapiu ○ (cynapi ○ (elata | ALISMA ○ [<i>lanceol</i> ○ plantag | ANEMON ○ nemoros ○ ranuncu ○ (ranunc | ARMERI ○ <i>arenari</i> ○ (<i>arenar</i>) | BUNIAS ○ erucago | BUDDLE ○ <i>davidii</i> | CERAST ○ <i>arvense</i> ○ (<i>arvens</i>) ○ (<i>strict</i>) ○ brachyp ○ (brachy ○ fontanu ○ (vulgar ○ glomera ○ gr. pumi ○ l glutino ○ l pilulum ○ l semidec ○ <i>tomento</i> | CERVAR ○ rivini | | |
| AGRIMO ○ eupator ○ (eupato ○ (grandi ○ (procera | ALISMA ○ [<i>lanceol</i> ○ plantag | ANEMON ○ nemoros ○ ranuncu ○ (ranunc | ARNICA ○ <i>montana</i> | BUNIAS ○ erucago | BUDDLE ○ <i>davidii</i> | CERAST ○ <i>arvense</i> ○ (<i>arvens</i>) ○ (<i>strict</i>) ○ brachyp ○ (brachy ○ fontanu ○ (vulgar ○ glomera ○ gr. pumi ○ l glutino ○ l pilulum ○ l semidec ○ <i>tomento</i> | CERVAR ○ rivini | | |
| AGRO'MMA ○ githago | ALISMA ○ [<i>lanceol</i> ○ plantag | ANEMON ○ nemoros ○ ranuncu ○ (ranunc | ARNOSE ○ <i>minima</i> | BUNIAS ○ erucago | BUDDLE ○ <i>davidii</i> | CERAST ○ <i>arvense</i> ○ (<i>arvens</i>) ○ (<i>strict</i>) ○ brachyp ○ (brachy ○ fontanu ○ (vulgar ○ glomera ○ gr. pumi ○ l glutino ○ l pilulum ○ l semidec ○ <i>tomento</i> | CERVAR ○ rivini | | |
| AGROST ○ canina ○ [canina ○ [opulen ○ capilla ○ [capill ○ castel ○ [castel ○ [mutica ○ curtisi ○ gr. stol ○ l gigante ○ l stoloni ○ l [arenar ○ l [stoloni ○ vineali ○ (ericet ○ (vineal | ALISMA ○ [<i>lanceol</i> ○ plantag | ANEMON ○ nemoros ○ ranuncu ○ (ranunc | ARRHEN ○ elatius ○ (bulbos ○ (elatiu | BUNIAS ○ erucago | BUDDLE ○ <i>davidii</i> | CERAST ○ <i>arvense</i> ○ (<i>arvens</i>) ○ (<i>strict</i>) ○ brachyp ○ (brachy ○ fontanu ○ (vulgar ○ glomera ○ gr. pumi ○ l glutino ○ l pilulum ○ l semidec ○ <i>tomento</i> | CERVAR ○ rivini | | |
| ALYSSU ○ <i>alyssoi</i> ○ montanu | ALISMA ○ [<i>lanceol</i> ○ plantag | ANEMON ○ nemoros ○ ranuncu ○ (ranunc | ARTEM ○ absinth ○ (<i>annua</i>) ○ <i>verloti</i> ○ vulgari | BUNIAS ○ erucago | BUDDLE ○ <i>davidii</i> | CERAST ○ <i>arvense</i> ○ (<i>arvens</i>) ○ (<i>strict</i>) ○ brachyp ○ (brachy ○ fontanu ○ (vulgar ○ glomera ○ gr. pumi ○ l glutino ○ l pilulum ○ l semidec ○ <i>tomento</i> | CERVAR ○ rivini | | |
| AMARAN ○ <i>albus</i> ○ blitum ○ (blitum ○ (emargi ○ [<i>deflexu</i> ○ graeciz ○ (silves ○ (<i>hybridu</i>) ○ (<i>boucho</i>) ○ (<i>hybrid</i>) ○ [<i>ferythr</i> ○ [<i>hybrid</i> ○ (ericet ○ (<i>patulu</i>) ○ [<i>ipseu-r</i> | ALISMA ○ [<i>lanceol</i> ○ plantag | ANEMON ○ nemoros ○ ranuncu ○ (ranunc | ARUM ○ italicu ○ maculat | BUNIAS ○ erucago | BUDDLE ○ <i>davidii</i> | CERAST ○ <i>arvense</i> ○ (<i>arvens</i>) ○ (<i>strict</i>) ○ brachyp ○ (brachy ○ fontanu ○ (vulgar ○ glomera ○ gr. pumi ○ l glutino ○ l pilulum ○ l semidec ○ <i>tomento</i> | CERVAR ○ rivini | | |
| ANTHOX ○ <i>aristat</i> ○ odoratu | ALISMA ○ [<i>lanceol</i> ○ plantag | ANEMON ○ nemoros ○ ranuncu ○ (ranunc | ASPARA ○ officin ○ (offici | BUNIAS ○ erucago | BUDDLE ○ <i>davidii</i> | CERAST ○ <i>arvense</i> ○ (<i>arvens</i>) ○ (<i>strict</i>) ○ brachyp ○ (brachy ○ fontanu ○ (vulgar ○ glomera ○ gr. pumi ○ l glutino ○ l pilulum ○ l semidec ○ <i>tomento</i> | CERVAR ○ rivini | | |
| ANTHRI ○ <i>caucali</i> ○ [<i>caucali</i> ○ cerefol ○ [cerefo ○ sylvest ○ (sylves ○ [latis ○ (sylves | ALISMA ○ [<i>lanceol</i> ○ plantag | ANEMON ○ nemoros ○ ranuncu ○ (ranunc | ASPE'ULA ○ arvensi ○ cynanch ○ (cynanc | BUNIAS ○ erucago | BUDDLE ○ <i>davidii</i> | CERAST ○ <i>arvense</i> ○ (<i>arvens</i>) ○ (<i>strict</i>) ○ brachyp ○ (brachy ○ fontanu ○ (vulgar ○ glomera ○ gr. pumi ○ l glutino ○ l pilulum ○ l semidec ○ <i>tomento</i> | CERVAR ○ rivini | | |
| ANTHYL ○ vulnera ○ (carpat ○ (polyph ○ (pseudo ○ (vuln'ia | ALISMA ○ [<i>lanceol</i> ○ plantag | ANEMON ○ nemoros ○ ranuncu ○ (ranunc | ASPE'ULA ○ arvensi ○ cynanch ○ (cynanc | BUNIAS ○ erucago | BUDDLE ○ <i>davidii</i> | CERAST ○ <i>arvense</i> ○ (<i>arvens</i>) ○ (<i>strict</i>) ○ brachyp ○ (brachy ○ fontanu ○ (vulgar ○ glomera ○ gr. pumi ○ l glutino ○ l pilulum ○ l semidec ○ <i>tomento</i> | CERVAR ○ rivini | | |

| | | | |
|-----------------|---|-----------------|--|
| surligné | TAXON PROTÉGÉ RÉGLEMENTAIREMENT (niveau européen, national ou régional) | italique | TAXON EXOTIQUE ENVAHISSANT (avéré, potentiel, émergent...) |
| surligné | TAXON À PROTECTION DÉPARTEMENTALE | (taxon | SOUS-ESPÈCE |
| souligné | AUTRE TAXON REMARQUABLE (HORS TAXONS PROTÉGÉS) (liste rouge, livre rouge) | [taxon | VARIÉTÉ |
| l taxon | TAXON DU GROUPE : taxon appartenant au groupe taxonomique indiqué au-dessus du trait vertical | { taxon | FORME |
| | | # taxon | CULTIVAR |

| | | | | | | | | | |
|--------------------|----------------------|--------------------|--------------------|--------------------|--------------------|--------------------|-----------------------|--------------------|-------------------|
| ○ palustr | CORYLU | CYTISU | DIGITAR | ○ (repens | ○ (cicuta | FAGUS | ○ officin | GERANI | HELIOT |
| ○ tuberos | ○ avellan | ○ lotoid | ○ ischaem | ○ gr. hybr | ○ ERUCA | ○ sylvati | ○ (offici | ○ columbi | ○ europae |
| ○ vulgare | CORYNE | ○ <i>multifl</i> | ○ sanguin | ○ l camp x rep | ○ sativa | FALCAR | ○ (wirtge | ○ dissect | HELLEB |
| ○ (vulgar | ○ canesce | ○ oromedi | DIOSCO | EPIKER | ERUCAS | ○ vulgari | ○ parvifl | ○ lucidum | ○ foetid |
| CISTUS | COTA | ○ scopari | ○ commun | ○ <i>pyrenai</i> | ○ nasturt | FALLOP | ○ vaillan | ○ molle | ○ viridis |
| ○ <i>salviif</i> | ○ <i>altiss</i> | ○ (revert | DIPILOT | EPILOB | ○ (nastur | ○ <i>auberti</i> | GALANT | ○ nodosum | ○ (occide |
| ○ <i>umbell</i> | ○ <i>helmsi</i> | ○ (scopar | ○ muralis | ○ angust | ○ articu | ○ <i>baldsch</i> | ○ nivalis | ○ phaeum | HELMIN |
| ○ <i>umbell</i> | ○ <i>tillaea</i> | ○ (<i>striatu</i> | ○ tenuifo | ○ (angust | ○ hirsuta | ○ convolv | GALATE | ○ (phaeum | ○ echioi |
| CLADAN | CRATAE | ○ (<i>striat</i> | DIPSAC | ○ lanceol | ○ <i>loisel</i> | ○ dumetor | ○ pratens | ○ purpur | HELOSCIA |
| ○ mixtus | ○ german | DACT'RHIS | ○ fullonu | ○ lanco | ERVUM | FESTUC | ○ linosy | ○ pusillu | ○ <i>inundatu</i> |
| CLADIU | ○ laeviga | ○ glomera | ○ lacinia | ○ lanceol | ○ gracil | ○ gr. ovin | GALEGA | ○ pyrenai | ○ nodiflor |
| ○ mariscu | ○ monogyn | ○ (glomer | ○ pilosus | ○ lanceol | ○ (arvern | ○ l arvern | ○ officin | ○ (pyrena | HEMERO |
| CLAYTO | ○ xmedia | ○ (hispani | DITTRI | ○ montanu | ○ tetrap | ○ l (costei | GALEOP | ○ roberti | ○ <i>fulva</i> |
| ○ <i>perfoli</i> | CREPIS | ○ elata | ○ graveol | ○ obscuru | ERYNGI | ○ l (brevip | ○ gr. ladanu | ○ rotundi | HERACL |
| CLEMAT | ○ <i>biennis</i> | ○ (<i>sesqui</i> | DORONI | ○ palustr | ○ campest | ○ l (auquier | ○ l angust | ○ sanguin | ○ <i>mantega</i> |
| ○ flammul | ○ capilla | ○ fuchsi | ○ austria | ○ parvifl | ERYSIM | ○ l (brevip | ○ l (ladanum | ○ sylvati | ○ gr. spho |
| ○ vitalba | ○ <i>conyzif</i> | ○ (fuchsi | ○ pardali | ○ roseum | ○ cheiri | ○ l (longifo | ○ l (segetu | GEUM | ○ l sibiric |
| CLINOP | ○ foetida | ○ (<i>incarna</i> | DRABA | ○ (<i>roseum</i> | ERYTHRA | ○ l (margin | ○ l (xochre | ○ urbanum | ○ l (sibiric |
| ○ acinos | ○ (foetid | ○ (<i>ochran</i> | ○ muralis | ○ tetrago | ○ <i>guttat</i> | ○ l (margin | ○ l (xwirtge | GLADIO | ○ l (elegans |
| ○ nepeta | ○ nicaeen | ○ maculat | ○ verna | ○ (lamyi | ERYTHRO | ○ l (ovina | ○ (<i>specio</i> | ○ gr. tetrah | ○ l (sphond |
| ○ (<i>glandu</i> | ○ paludos | ○ (ericet | DROSER | ○ (tetrag | ○ dens-ca | ○ l (tetrahi | ○ gr. tetrah | GLEBIONI | ○ l (sphond |
| ○ (<i>nepeta</i> | ○ (<i>pulchra</i> | ○ (macu'ta | ○ interme | EPIPAC | ESCHSC | ○ l (guestf | ○ l bifida | ○ segetum | HERNIA |
| ○ (<i>nepeta</i> | ○ (<i>sancta</i> | ○ (<i>majali</i> | ○ rotundi | ○ (<i>atrurub</i> | ○ califor | ○ gr. rubr | GALINS | ○ hederac | ○ glabra |
| ○ gr. sylvat | ○ (<i>nemaus</i> | ○ (<i>majal</i> | DRYM'OA | ○ hellebo | EUPATO | ○ l (het'alla | ○ parvifl | GLECHO | ○ hirsuta |
| ○ l (ascend | ○ setosa | ○ (<i>sambuc</i> | ○ sylvat | ○ (helleb | ○ (cannab | ○ l (het'ylla | ○ <i>quadrir</i> | ○ hederac | HESPER |
| ○ l (sylvat | ○ vesicar | ○ (<i>rubra</i> | DRYOPT | ○ microph | ○ amygdal | ○ l (microp | GALIUM | GLOBUL | ○ matrona |
| ○ vulgare | ○ (taraxa | ○ (<i>sambuc</i> | ○ affinis | ○ palustr | ○ (amygda | ○ l (nigresc | ○ aparine | ○ bisnaga | ○ (matron |
| ○ (vulgar | CROCUS | ○ viridis | ○ (affini | EUQUISE | ○ (amygda | ○ l (rivula | ○ (aparin | GLYCER | ○ (nivea |
| COINCY | ○ nudiflo | DAMASO | ○ (borrer | ○ arvens | ○ angulat | ○ l (rubra | ○ (spuriu | ○ gr. fluita | HIERAC |
| ○ monensi | CRUC,ANE | ○ alisma | ○ (cambre | ○ fluiat | ○ cyparis | ○ l (rubra | ○ debile | ○ l declina | ○ gr. acumi |
| ○ (cheira | ○ angust | DANTHO | ○ carthus | ○ (hyemal | ○ dulcis | ○ l (rubra | ○ gr. moll | ○ l fluitan | ○ l acumin |
| COLCHI | ○ <i>autumna</i> | ○ decumb | ○ cristat | ○ (hyemal | ○ (incomp | FIGARI | ○ l (album | ○ l (notata | ○ l aurule |
| ○ grandif | CRUC,ATA | ○ (decumb | ○ dilat | ○ palustr | ○ gr. esula | ○ verna | ○ l (notata | ○ (<i>maxima</i> | ○ l (aurico |
| COLLUM | ○ laevipe | DAPHNE | ○ filix-m | ○ (<i>ramosis</i> | ○ l (esula | FIGUS | ○ l (corrudi | GNAPHA | ○ l (avico |
| ○ grandif | CRYPTOG | ○ laureol | ○ (<i>oreades</i> | ○ (<i>ramosi</i> | ○ l (esula | ○ carica | ○ l (lucidum | ○ sylvat | ○ gr. buglos |
| COLUTE | ○ crispa | ○ (laureo | ○ remota | ○ sylvati | ○ l (xpseudo | FILAGO | ○ l (mollugo | ○ cinera | ○ gr. glauci |
| ○ arbores | CRYPTOM | ○ (laureo | ○ xcomple | ○ telmate | ○ (<i>exigua</i> | ○ arvens | ○ odoratu | ○ gr. palu | ○ l (fragil |
| COMARU | ○ japoni | DATURA | ○ xdeweve | ○ (telmat | ○ (<i>falcata</i> | ○ german | ○ l (elonga | GOODYE | ○ l (glaucinu |
| ○ palust | CUSCUT | ○ (<i>stramon</i> | DYSPHA | ○ xlitora | ○ (<i>falcat</i> | ○ l (lutesce | ○ l (palustr | ○ repens | ○ l (aspenn |
| CONIUM | ○ epithym | DAUCUS | ○ (<i>ambros</i> | ○ xmoorei | ○ (<i>flavico</i> | ○ l (lutesc | ○ gr. parisi | GRATIO | ○ l (pal'ulu |
| ○ maculat | ○ (epithy | ○ carota | ECHI'LOA | ERAGRO | ○ (<i>costea</i> | ○ l (pyramid | ○ (<i>divari</i> | ○ officin | ○ l (prasin |
| ○ (macula | ○ europae | ○ carota | ○ crus-ga | ○ ciliano | ○ (<i>flavico</i> | FILIFE | ○ l (parisi | GROENL | ○ gr. insuet |
| CONOPO | CYANUS | DELPHI | ECHIUM | ○ minor | ○ (<i>verruc</i> | ○ ulmaria | ○ l (leiocar | ○ densa | ○ l (cuspid |
| ○ majus | ○ (<i>montan</i> | ○ ajacis | ○ vulgare | ○ (<i>pectina</i> | ○ heliosc | ○ vulgari | ○ l (parisi | GYMNAD | ○ gr. irrigu |
| ○ (majus | ○ (<i>segetu</i> | ○ consol | ○ (vulgar | ○ pilosa | ○ (helios | FOENIC | ○ l (pumilo | ○ conopse | ○ l (aspenn |
| CONRIN | CYCLAM | ○ consol | EGERIA | ERICA | ○ hyberna | ○ (vulgar | ○ l (pumilo | GYMNOCA | ○ l (irrigu |
| ○ orient | ○ hederif | DESCHA | ○ densa | ○ ciliari | ○ (<i>illiri</i> | FRAGAR | ○ l (timeroy | ○ (<i>dryopte</i> | ○ gr. lachen |
| CONVAL | ○ oblonga | ○ cespito | ELATIN | ○ cinerea | ○ (<i>lathyri</i> | ○ moschat | ○ saxatil | GYPSOP | ○ l (argilla |
| ○ majalis | CYMBAL | ○ (cespit | ○ alsinas | ○ (<i>scopari</i> | ○ (<i>maculat</i> | ○ vesca | ○ (<i>tricorn</i> | ○ muralis | ○ l (chlo |
| CONVOL | ○ muralis | ○ (cespit | ○ (<i>hexandr</i> | ○ (<i>scopar</i> | ○ peplus | ○ viridis | ○ uligino | HAMMAR | ○ l (paucif |
| ○ arvens | CYNODO | ○ (subalp | ELEOCH | ○ (<i>scopar</i> | ○ (<i>platyph</i> | ○ (viridi | ○ verum | ○ paludos | ○ gr. laevig |
| ○ cantabr | ○ dactylo | ○ (parvifl | ○ (<i>acicula</i> | ○ tetrali | ○ (<i>prostra</i> | ○ xananas | ○ verum | HERERA | ○ l (dryoph |
| ○ sepium | ○ (dactyl | DESCUR | ○ multica | ○ vagans | ○ (<i>sequier</i> | FOENIC | ○ (verum | ○ helix | ○ l (firmum |
| CORIRI | CORIAN | ○ sophia | ○ (<i>ovata</i> | ERIGER | ○ (<i>seguie</i> | ○ (viridi | GASTRI | HELIA'UM | ○ l (laevigat |
| ○ (<i>myrtif</i> | ○ creticu | DIANTH | ○ gr. palust | ○ (<i>acris</i> | ○ (<i>serpens</i> | ○ xananas | ○ (<i>ventric</i> | ○ apennin | ○ gr. levica |
| CORNUS | ○ officin | ○ armeria | ○ l palustr | ○ (<i>acris</i> | ○ (<i>ffissi</i> | FRANGU | GAUDIN | ○ (apenni | ○ l (commix |
| ○ mas | CYNOSU | ○ (armeri | ○ l (palust | ○ (<i>seroti</i> | ○ (<i>serpe</i> | ○ alnus | ○ fragili | ○ nummul | ○ l (macul |
| ○ sanguin | ○ cristat | ○ carthus | ○ l (walter | ○ (<i>annuus</i> | ○ (<i>stricta</i> | ○ (alnu | GENIST | ○ l (schi | ○ l (tinctu |
| ○ (sangu | ○ echinat | ○ (carthu | ○ (<i>uniglum</i> | ○ (<i>annuus</i> | ○ (<i>stricta</i> | FRAXIN | ○ pilosa | ○ l (schi | ○ l (tinctu |
| CORONI | ○ (<i>echinat</i> | ○ deltoid | ○ quinqu | ○ (<i>septen</i> | ○ (<i>stricta</i> | ○ angust | ○ (pilosa | ○ gr. macula | ○ l (tinctu |
| ○ (<i>minima</i> | CYPERU | ○ hyssopi | ELEUSI | ○ (<i>blakei</i> | ○ (<i>stricta</i> | ○ (angust | ○ sagitta | HELIA'US | ○ l (approx |
| ○ (<i>minima</i> | ○ (<i>eragros</i> | ○ (<i>seguier</i> | ○ (<i>indica</i> | ○ (<i>bonari</i> | ○ (<i>stricta</i> | ○ excelsi | ○ tinctor | ○ gr. tube | ○ l (arrect |
| ○ (<i>scorpio</i> | ○ (<i>flaves</i> | ○ pseudo | ○ (<i>trista</i> | ○ (<i>canade</i> | ○ (<i>stricta</i> | ○ ornus | ○ (<i>gr. tube</i> | ○ l (bastar | ○ l (inquin |
| ○ varia | ○ (<i>fuscus</i> | ○ superbu | ELODEA | ○ (<i>karwins</i> | ○ (<i>stricta</i> | ○ (ornus | ○ (<i>l. tuberos</i> | ○ l (inquin | ○ gr. muroru |
| CORRIG | ○ (<i>longus</i> | ○ (superb | ○ (<i>canaden</i> | ○ (<i>sumatr</i> | ○ (<i>stricta</i> | FUMANA | ○ (<i>xlactif</i> | ○ l (adelph | ○ l (muroru |
| ○ littora | ○ micheli | DIGITA | ○ (<i>nuttall</i> | ERIOPH | ○ (<i>micrant</i> | ○ (<i>ericif</i> | HELICH | ○ l (fallen | ○ l (muroru |
| ○ (littor | CYSTOP | ○ (<i>purpur</i> | ELYMUS | ○ angust | ○ officin | ○ procumb | ○ (<i>stoecha</i> | ○ l (arrect | ○ l (oblong |
| CORTAD | ○ gr. frag | DIGITAL | ○ caninu | ○ (angust | ○ (<i>ostitko</i> | FUMARI | ○ (<i>stoech</i> | ○ gr. ovalif | ○ l (oblong |
| ○ (<i>selloa</i> | ○ l (<i>dickiea</i> | ○ (<i>lutea</i> | ELYTRI | ○ gracile | EVONYM | ○ (<i>ostitko</i> | GENT'ANA | ○ l (bastar | ○ l (ovalif |
| CORYDA | ○ l (<i>fragil</i> | ○ purpure | ○ campest | ○ latifol | ○ europae | ○ (<i>ostitko</i> | ○ cruciat | ○ l (inquin | ○ l (recens |
| ○ solida | ○ (<i>fragil</i> | DIGITA | ○ (campes | ○ vaginat | EXACUL | ○ (<i>ostitko</i> | ○ lutea | ○ gr. patens | ○ l (hirsutu |
| | | ○ (<i>fragil</i> | ○ repens | ○ cicular | ○ (<i>pusillu</i> | FAGOPY | ○ (lutea | | |
| | | | | | ○ esculen | | ○ (<i>pneumon</i> | | |
| | | | | | | | GENT'NEL | | |
| | | | | | | | ○ campest | | |
| | | | | | | | ○ (campes | | |
| | | | | | | | GENT'NOP | | |
| | | | | | | | ○ ciliat | | |

| | |
|----------|---|
| surligné | TAXON PROTÉGÉ RÉGLEMENTAIREMENT (niveau européen, national ou régional) |
| surligné | TAXON À PROTECTION DÉPARTEMENTALE |
| souligné | AUTRE TAXON REMARQUABLE (liste rouge, livre rouge) |
| taxon | TAXON DU GROUPE : taxon appartenant au groupe taxonomique indiqué au-dessus du trait vertical |

| | |
|----------|---|
| italique | TAXON EXOTIQUE ENVAHISSANT (avéré, potentiel, émergeant...) |
| (taxon | SOUS-ESPÈCE |
| [taxon | VARIÉTÉ |
| { taxon | FORME |
| # taxon | CULTIVAR |

| | | | | | | | | | |
|------------------|-------------------|------------------|------------------|-------------------|------------------|------------------|------------------|-------------------|---------------------|
| ○ gr. provin | ○ pulchru | ○ <u>compres</u> | ○ <u>aphaca</u> | LINDER | ○ (campes | ○ (sativa | MONTIA | ○ (thraci | ○ (vulgar |
| ○ l subhir | ○ tetrapt | ○ conglom | ○ <u>[aphaca</u> | ○ <i>dubia</i> | ○ conges | ○ x(ambigu | ○ arvens | NIGELL | ORLAYA |
| ○ gr. schmid | ○ xdesetan | ○ effusus | ○ <u>hirsutu</u> | LINUM | ○ desvaux | MELAMP | ○ fontana | ○ <u>arvensi</u> | ○ grandif |
| ○ soncho | ○ x(deseta | ○ inflexu | ○ latifol | ○ austria | ○ (deset | ○ <u>forst</u> | ○ hallii | ○ <u>(arvens</u> | ORNI'GAL |
| ○ gr. taurin | HYPOCH | ○ pygmaeu | ○ [latifo | ○ (austri | ○ (forste | ○ <u>crisat</u> | MUSCAR | NUPHAR | ○ l diverg |
| ○ l frutic | ○ <u>glabra</u> | ○ squarro | ○ [linifo | ○ (collin | ○ (multi | ○ <u>pratens</u> | ○ armenia | ○ lutea | ○ l orthop |
| ○ umbellat | ○ <u>radicat</u> | ○ <u>subnodu</u> | ○ [montan | ○ [cathar | ○ [palles | ○ <u>sylvati</u> | ○ cosomus | NYMPHA | ○ l umbella |
| ○ gr. virgul | ○ (ericet | ○ <u>tenagei</u> | ○ [niger | ○ leonii | ○ nivea | MELICA | ○ neglect | ○ alba | ORNI'PUS |
| ○ l curvid | ○ (radica | ○ <u>tenuis</u> | ○ [niger | ○ <u>strictu</u> | ○ pilosa | ○ ciliata | MYAGRU | NYMPHO | ○ <u>compres</u> |
| ○ l dumosu | IBERIS | ○ <u>(tenuis</u> | ○ nissoli | ○ (strict | ○ sylvati | ○ ciliat | ○ <u>perfoli</u> | ○ peltata | ○ <u>perpusi</u> |
| ○ l obliqu | ○ <u>amara</u> | JUNIFE | ○ [glabre | ○ <u>suffrut</u> | ○ (sieber | ○ nutans | MYOS'TIS | ODONTI | ○ <u>pinnatu</u> |
| ○ l vagum | ILEX | ○ communi | ○ pannoni | ○ <u>(appres</u> | ○ (sylvat | ○ uniflor | ○ arvensi | ○ luteus | OROBAN |
| ○ l virgul | ○ aquifol | ○ (commun | ○ (asphod | ○ <u>tenuifol</u> | LYCHNI | MELISS | ○ (arvens | ○ (luteus | ○ <u>alba</u> |
| HIMANT | ILLECE | KICKXI | ○ pratens | ○ <u>trigvnu</u> | ○ corona | ○ officin | ○ (umbrat | ○ <u>vernus</u> | ○ <u>amethys</u> |
| ○ hircinu | ○ <u>vertici</u> | ○ (elatin | ○ <u>sphaeri</u> | ○ usitati | ○ flos-c | ○ (offici | ○ balbisi | ○ (seroti | ○ <u>canvoph</u> |
| HIPPOC | IMPATI | ○ spuria | ○ <u>tuberos</u> | ○ (angust | ○ (flos-c | MELITT | ○ gr. disc | ○ <u>(vernus</u> | ○ <u>gracili</u> |
| ○ <u>comosa</u> | ○ <u>balfour</u> | ○ (spuria | LAIURUS | ○ (usitat | LYCIUM | ○ melisso | ○ l discolo | OENANT | ○ hederare |
| ○ emerus | ○ <u>glandul</u> | KNAUTI | ○ nobilis | LIPAND | ○ <u>barbaru</u> | ○ (meliss | ○ l dubia | ○ <u>aquatic</u> | ○ lutea |
| ○ (emerus | ○ noli-ta | ○ arvensi | LAVAND | ○ polysp | ○ chinens | MENTHA | ○ ramosis | ○ (fistulo | ○ minor |
| HIPPUR | ○ <u>parvifi</u> | ○ arverne | ○ <u>angusti</u> | LITHOS | LYCOP'LA | ○ aquatic | ○ (ramosi | ○ <u>lachena</u> | ○ rapum-g |
| ○ vulgari | IMPER'O | ○ basalti | ○ <u>(angust</u> | ○ officin | ○ inundat | ○ arvensi | ○ gr. scor | ○ <u>peucedae</u> | ○ <u>teucrici</u> |
| HOLCUS | ○ ostruth | ○ forezi | LEERSI | LITTOR | LYCOPS | ○ longifo | ○ l laxa | ○ (piscipit | ○ varieg |
| ○ lanatus | INULA | KOELER | ○ oryzoid | ○ uniflor | ○ arvens | ○ (longif | ○ l martin | ○ l cespit | OSMUND |
| ○ (lanatu | ○ conyza | ○ gr. pyra | LEGOUS | LOBELI | LYCOPU | ○ pulegiu | ○ l nemoros | ○ l martin | ○ regalis |
| ○ mollis | ○ heleniu | ○ l macrant | ○ <u>hybrida</u> | ○ <u>urens</u> | ○ europae | ○ (spicat | ○ l scorpio | OENOTH | OXALIS |
| ○ (mollis | ○ montana | ○ l (macran | ○ <u>speculu</u> | LOGFIA | LYCOP'UM | ○ (suaveol | ○ l secunda | ○ <u>biennis</u> | ○ acetose |
| HOLOST | ○ salicin | ○ l pyramid | LEMNA | ○ <u>gallic</u> | ○ clavatu | ○ (suaveol | ○ stricta | ○ <u>glaziov</u> | ○ cornicu |
| ○ umbella | ○ <u>spiraei</u> | ○ l (pyrami | ○ gibba | ○ minima | ○ (clavatu | ○ xpiperi | ○ gr. sylv | ○ oehlke | ○ comicu |
| HORDEL | IRIS | ○ vallesi | ○ minor | LOLIUM | ○ <u>tristac</u> | ○ xrotun | ○ l (cespumbe | ○ parvifi | ○ [atropu |
| ○ <u>europae</u> | ○ foetidi | ○ (valles | ○ <u>minuta</u> | ○ multifi | LYSICH | ○ xrotun | ○ l (teresati | ○ suaveol | ○ [cornic |
| HORDEU | ○ germani | LABURN | ○ trisulc | ○ perenne | ○ <u>americ</u> | ○ xvertic | ○ l sylvati | ○ subterm | ○ <u>gr. fontan</u> |
| ○ murinum | ○ pseudac | ○ anagyro | LEONTO | ○ <u>rigidum</u> | LYSIMA | MENYAN | MYOS'TON | ○ xfallax | ○ l <u>dilleni</u> |
| ○ (murinu | ○ sibiri | LACTUC | ○ <u>crispus</u> | ○ (rigidu | ○ arvens | ○ trifoli | ○ aquatic | ONOBRY | ○ l <u>fontana</u> |
| ○ <u>secalin</u> | ISOETE | ○ murali | ○ hispidu | ○ <u>temulen</u> | ○ (arvens | MERCUR | MYOSUR | ○ vicifoli | OXYBAS |
| ○ vulgare | ○ echinos | ○ perenni | ○ (hispid | LONCOM | ○ foemin | ○ annua | ○ minimus | ONONIS | ○ glauca |
| ○ (distic | ○ lacustr | ○ plumie | ○ saxatil | ○ pyrena | ○ <u>minima</u> | ○ huetii | MYRIOP | ○ <u>natrix</u> | ○ <u>rubra</u> |
| (vulgar | ○ velata | ○ <u>saligna</u> | ○ serriol | ○ (pyren | ○ nemorum | ○ perenni | ○ alteri | ○ pusilla | ○ [interm |
| HORNUN | ○ (tenuis | ○ <u>viminea</u> | LEONUR | ○ punctat | ○ <u>nummula</u> | MEUM | ○ <u>aquati</u> | ○ (pusill | ○ [rubra |
| ○ <u>petraea</u> | ISOLEP | ○ <u>(chondr</u> | ○ cardiac | ○ tenell | LYTHRU | ○ athaman | ○ hetero | ○ (procur | PANICU |
| HOTTON | ○ <u>fluitta</u> | ○ virosa | LEPIDI | ○ vulgari | ○ <u>hyssopi</u> | MIBORA | ○ spicatu | ○ (spinos | ○ <u>capilla</u> |
| ○ palustr | ○ setacea | LAGARO | ○ campest | LYSIMA | ○ portula | ○ minima | ○ vertici | ○ (spinos | ○ <u>dichoto</u> |
| HUMULU | ISOPYR | ○ <u>major</u> | ○ densifl | LYTHRU | ○ salicar | MICROP | ONOPOR | ○ (spina | ○ <u>miliace</u> |
| ○ lupulus | ○ thalic | LAMIUM | ○ <u>didymu</u> | ○ <u>hyssopi</u> | MAIANT | ○ tenellu | ○ <u>acanthi</u> | OPHIOP | ○ <u>(miliac</u> |
| HUPERZ | JACOBA | ○ album | ○ draba | ○ portula | ○ bifoliu | ○ {arist | NAJAS | ○ azoric | PAPAVE |
| ○ selago | ○ adonid | ○ amplexi | ○ gramini | ○ salicar | MALUS | ○ {arist | ○ <u>marina</u> | ○ vulgatu | ○ <u>argemon</u> |
| ○ (selago | ○ gr. aquati | ○ galeobd | ○ heterop | LOTUS | ○ domestic | ○ {arist | ○ <u>(marina</u> | OPHRYS | ○ <u>(argemo</u> |
| HYA'OIDES | ○ l aquati | ○ (montan | ○ ruderal | ○ angusti | ○ sylvest | MICROT | ○ <u>minor</u> | ○ apifera | ○ cambric |
| ○ hispan | ○ l <u>errati</u> | ○ hybridu | ○ squama | ○ cornicu | MAIANT | ○ perfol | NARCIS | ○ <u>araneola</u> | ○ dubium |
| ○ <u>non-scr</u> | ○ erucif | ○ <u>maculat</u> | ○ <u>virgini</u> | ○ (cornic | MALUS | MILIU | ○ <u>poeticu</u> | ○ <u>aranifer</u> | ○ (dubium |
| xmassa | ○ (eruci | LAPHAN | LEUCA'UM | ○ dorycn | ○ sylvest | ○ effusum | ○ pseudon | ○ <u>(aranif</u> | ○ (lecoqi |
| HYDR'CHA | ○ vulgar | ○ <u>luteoa</u> | ○ <u>monspei</u> | ○ glaber | MALVA | MINUAR | ○ (major | ○ fuciflo | ○ hybridu |
| ○ morsus- | ○ (vulgar | LAPPUL | ○ gr. vulgare | ○ hirsut | ○ <u>alcea</u> | ○ <u>hybrida</u> | ○ (pseudu | ○ (fucifl | ○ rhoeas |
| HYDR'COT | JASION | ○ squarro | ○ l ircutia | ○ hispid | ○ moschat | ○ (hybrid | NARDUS | ○ (fucifl | ○ somnife |
| ○ vulgari | ○ laevis | LAPSAN | ○ l (ircuti | ○ <u>mariti</u> | ○ neglect | ○ <u>(laxa</u> | ○ stricta | ○ (incubac | PAPAVE |
| HYLOTE | ○ montana | ○ communi | ○ l vulgare | ○ <u>hirsu</u> | ○ <u>setige</u> | ○ <u>(tenuif</u> | ○ officin | ○ insecti | ○ (sommif |
| ○ maximu | JASMIN | ○ (commun | LIGUST | ○ peduncu | ○ sylvest | MISOPA | ○ lutea | ○ <u>lutea</u> | PARAGY |
| ○ teleph | ○ nudifi | ○ (interm | ○ <u>lucidu</u> | LUDWIG | MARRUB | ○ orontiu | NASTUR | ○ scolopa | ○ marant |
| HYOSCY | JUGLAN | LARIX | ○ vulgare | ○ <u>grandif</u> | ○ vulgare | MOEHRI | ○ microph | ○ specul | PARENT |
| ○ niger | ○ nigra | ○ decidua | LILIU | ○ <u>(hexape</u> | MATRIC | ○ officin | ○ {offici | ○ sulcata | ○ <u>viscosa</u> |
| HYPERI | ○ regia | ○ (decidu | ○ martago | ○ palustr | ○ chamom | MOENCH | ○ [siifol | ORCHIS | PARIET |
| ○ <u>androsa</u> | JUNCUS | ○ (decidu | LIMODO | ○ <u>peploi</u> | ○ <u>discoi</u> | ○ erecta | NEOTIN | ○ anthropo | ○ judaica |
| ○ <u>calycin</u> | ○ acutifi | ○ kaempfe | ○ abortiv | ○ <u>(montev</u> | LUNARI | MOLINI | ○ [ustula | ○ mascula | ○ officin |
| ○ elodes | ○ articu | ○ xmarsch | LIMOSE | LUNARI | ○ annua | ○ caerule | NEOTINEA | ○ (mascul | PARIS |
| ○ hirsutu | ○ (articu | LASERP | ○ <u>aquatic</u> | ○ rediviv | ○ lupulin | ○ (lupuli | ○ ustulat | ○ <u>militar</u> | ○ quadrif |
| ○ humifus | ○ gr. bufon | ○ latifol | LINARI | LUPINU | ○ [lupuli | ○ [wilde | NEOTTI | ○ provinc | PARNAS |
| ○ linarii | ○ l bufoni | ○ [latifo | ○ <u>arvensi</u> | ○ <u>angusti</u> | ○ [wilde | ○ minima | ○ nidus-a | ○ purpure | ○ palustr |
| ○ maculat | ○ l [bufoni | LATHRA | ○ <u>pellice</u> | ○ <u>(reticu</u> | ○ orbicul | ○ caerul | ○ ovata | ○ simia | PARTHE |
| ○ (macula | ○ l [conges | ○ clandes | ○ repens | ○ <u>xregali</u> | ○ [orbicu | MONOTR | NEPETA | OREOPT | ○ <u>inserta</u> |
| ○ (obtus) | ○ l ranari | ○ squamar | ○ <u>supina</u> | LURONI | ○ polymor | ○ hypopit | ○ cataria | OREOSE | ○ <u>tricus</u> |
| ○ <u>montanu</u> | ○ bulbos | LATHYR | ○ (supina | ○ natans | ○ rigidul | ○ (hypoph | NESLIA | ○ <u>nigrum</u> | PASPAL |
| ○ perfora | ○ (bulbos | ○ angulat | ○ vulgari | LUZULA | ○ sativa | ○ (hypopi | ○ panicul | ORIGAN | ○ <u>dilata</u> |
| ○ [angust | ○ (kochii | ○ annuus | ○ xsepium | ○ campest | ○ <u>(falcat</u> | | | ○ vulgare | ○ <u>distich</u> |
| ○ lperfor | ○ capitat | | | | | | | | |

| | | | |
|-----------------|---|-----------------|---|
| <u>surligné</u> | TAXON PROTÉGÉ RÉGLEMENTAIREMENT (niveau européen, national ou régional) | <i>italique</i> | TAXON EXOTIQUE ENVAHISSANT (avéré, potentiel, émergeant...) |
| surligné | TAXON À PROTECTION DÉPARTEMENTALE | { taxon | SOUS-ESPÈCE |
| <u>souligné</u> | AUTRE TAXON REMARQUABLE (HORS TAXONS PROTÉGÉS) (liste rouge, livre rouge) | [taxon | VARIÉTÉ |
| taxon | TAXON DU GROUPE : taxon appartenant au groupe taxonomique indiqué au-dessus du trait vertical | { taxon | FORME |
| | | # taxon | CULTIVAR |

| | | | | | | | | | | | | | | | | | | | | | | | | | | | | | | | | | | | | | | | | | | | | | | | | | | | | | | | | | | | | | | | | | | | | | | | | | | | | | | | | | | | | | | | | | | |
|--|--|---|--|---|---|--|---|---|---|---|----------------------------|--|---|--|----------------------------|--|---|---|----------------------------|--|--|---|---|---|-----------------------------------|---------------------------------------|--|----------------------------|--|---|--------------------------------|----------------------------------|---|---|---|--------------------------|---|--|---|--|---|---|---|---|---|--|---------------------------|---|--|--|---|---|--|--|---------------------------|--|----------------------------------|--|-----------------------------------|------------------------------------|-------------------------------------|--|---|---|---|--|--|--|--|---|-------------------------|--|--|---|--|----------------------------------|---|--|---|---|--|-----------------------------------|---|--|--|--|--|---|----------------------------|--|
| PASTIN ○ sativa ○ (sativa) ○ [arvens ○ [sativa ○ (urens) | PILOSE ○ lactuc ○ (lactuc ○ offic ○ pelete ○ (pelete ○ saussu | POLYCN ○ <u>arvense</u> ○ <u>majus</u> | ○ fagine ○ <u>indica</u> ○ micrant ○ montana ○ (montan | POLYGA ○ calcare ○ comosa ○ serpyll ○ vulgari ○ (vulgar | PYROLA ○ minor ○ <u>rotundi</u> ○ <u>rotund</u> | RESEDA ○ lutea ○ (lutea ○ <u>luteola</u> | ○ subsect. Vestit ○ gr. tomen ○ l tomento ○ gr. villos ○ l villosa ○ sect. Pimpi ○ l <u>spinos</u> ○ l (<u>myriac</u> ○ l (<u>spinos</u> ○ sect. Rosa ○ l penduli ○ l <u>rugosa</u> ○ sect. Synst ○ l arvensi | ○ procumb ○ (muscos ○ (procum ○ subulat ○ [subula | ○ taberna SCILLA ○ bifolia | SESELI ○ montanu ○ (montan | SCIRPU ○ sylvati | SESLER ○ <u>caerule</u> ○ (<u>caerul</u> | SETARI ○ italica ○ (<u>italic</u> ○ (pyncnoc ○ (viridi ○ pumila ○ vertici ○ [ambigu ○ (vertic | PATZKE ○ panicu ○ (spadic | PILULA ○ globuli | POLYGN'NA ○ multifl ○ <u>odoratu</u> ○ vertici | POTERI ○ sangu ○ (balear ○ (sangu | RHAMNU ○ alatern ○ (alater ○ alpina ○ (alpina ○ cathart | ROSTRA ○ cristat | RUBIA ○ <u>peregr</u> ○ (<u>peregr</u> | SECLERA ○ annuus ○ (annuus ○ (polyc ○ perenni ○ (perenn ○ uncinat | PEDICU ○ palustr ○ (palust ○ sylvati ○ (sylvat | PIMPIN ○ major ○ rubra ○ saxifra ○ (saxifr | POLYGN'U ○ avicula ○ (avicul ○ (depres ○ (rurivag ○ bellard | PRENAN ○ <u>purpure</u> | RHAPON ○ conife ○ (conif | ROSTR ○ (cristat ○ l cinerea ○ fragili ○ pentand ○ purpure ○ repens ○ (repens ○ triandr ○ viminal ○ xmultin ○ xruben | PENTAG ○ semperv | PINGUI ○ <u>lusitan</u> ○ vulgari ○ (alpic ○ (vulga | PRIMUL ○ elatior ○ (elatio ○ veris ○ (column ○ [veris ○ vulgari ○ (rubra ○ (vulgar ○ xmedia | RHUS ○ <u>typhin</u> | RUBRIV ○ <u>polyst</u> | SECALE ○ cereale ○ (cereal | PERSIC ○ amphib ○ hydrop ○ lapath ○ (britti ○ (lapath ○ maculo ○ minor ○ mitis | PINUS ○ mugo ○ (uncina ○ <u>nigra</u> ○ (<u>larici</u> ○ (<u>nigra</u> ○ pinaste ○ strobus ○ sylvest | PROPE ○ autumn | RHODOD ○ <u>pontic</u> ○ (<u>baetic</u> | RUBUS ○ caesius ○ (idaeus ○ (idaeus ○ saxatil ○ sect. Coryli ○ sect. Rub ○ subsect. Hiemal ○ l ser. Canesc ○ l ser. Discol ○ l ser. Glandu ○ l ser. Histri ○ l ser. Micant ○ l ser. Pallid ○ l ser. Radula ○ l ser. Rhamni ○ l ser. Spreng ○ l ser. Sylvat ○ l ser. Vestit ○ subsect. Rubus | PETASI ○ <u>albus</u> ○ (<u>hybridu</u> ○ (<u>pyrenai</u> | PISTAC ○ <u>terebin</u> ○ (<u>terebi</u> | RANUNC ○ aconiti ○ acris ○ (acris ○ (friesi ○ <u>arvensi</u> ○ auricom ○ subg. Batrac ○ l aquatil ○ l fluitan ○ l hederac ○ l <u>oleleuc</u> ○ l omiophy ○ l peltatu ○ l (baudot ○ l (peltat ○ l penicil ○ l (penici ○ l (pseudo ○ l trichop ○ l (tricho ○ l <u>tripar</u> ○ bulbosu ○ (aleae ○ [bulbos ○ flammul ○ (flammu ○ [major ○ <u>gramin</u> ○ lingua ○ [bulbos ○ flammul ○ (flammu ○ [major ○ <u>gramin</u> ○ parvif ○ (<u>parvif</u> ○ platani ○ repens ○ sardous ○ (sardou ○ (xatard ○ <u>scelera</u> ○ (<u>sceler</u> ○ tuberos | RHINAN ○ alector ○ angusti ○ (angust ○ minor | RANUNC ○ aconiti ○ acris ○ (acris ○ (friesi ○ <u>arvensi</u> ○ auricom ○ subg. Batrac ○ l aquatil ○ l fluitan ○ l hederac ○ l <u>oleleuc</u> ○ l omiophy ○ l peltatu ○ l (baudot ○ l (peltat ○ l penicil ○ l (penici ○ l (pseudo ○ l trichop ○ l (tricho ○ l <u>tripar</u> ○ bulbosu ○ (aleae ○ [bulbos ○ flammul ○ (flammu ○ [major ○ <u>gramin</u> ○ lingua ○ [bulbos ○ flammul ○ (flammu ○ [major ○ <u>gramin</u> ○ parvif ○ (<u>parvif</u> ○ platani ○ repens ○ sardous ○ (sardou ○ (xatard ○ <u>scelera</u> ○ (<u>sceler</u> ○ tuberos | RHODOD ○ <u>pontic</u> ○ (<u>baetic</u> | RANUNC ○ aconiti ○ acris ○ (acris ○ (friesi ○ <u>arvensi</u> ○ auricom ○ subg. Batrac ○ l aquatil ○ l fluitan ○ l hederac ○ l <u>oleleuc</u> ○ l omiophy ○ l peltatu ○ l (baudot ○ l (peltat ○ l penicil ○ l (penici ○ l (pseudo ○ l trichop ○ l (tricho ○ l <u>tripar</u> ○ bulbosu ○ (aleae ○ [bulbos ○ flammul ○ (flammu ○ [major ○ <u>gramin</u> ○ lingua ○ [bulbos ○ flammul ○ (flammu ○ [major ○ <u>gramin</u> ○ parvif ○ (<u>parvif</u> ○ platani ○ repens ○ sardous ○ (sardou ○ (xatard ○ <u>scelera</u> ○ (<u>sceler</u> ○ tuberos | RUBUS ○ caesius ○ (idaeus ○ (idaeus ○ saxatil ○ sect. Coryli ○ sect. Rub ○ subsect. Hiemal ○ l ser. Canesc ○ l ser. Discol ○ l ser. Glandu ○ l ser. Histri ○ l ser. Micant ○ l ser. Pallid ○ l ser. Radula ○ l ser. Rhamni ○ l ser. Spreng ○ l ser. Sylvat ○ l ser. Vestit ○ subsect. Rubus | PETOR ○ prolife | PISUM ○ sativum ○ [arvens ○ (sativu | PRUNEL ○ grandif ○ lacinia ○ vulgari ○ (vulgar ○ xinterm | RUBUS ○ caesius ○ (idaeus ○ (idaeus ○ saxatil ○ sect. Coryli ○ sect. Rub ○ subsect. Hiemal ○ l ser. Canesc ○ l ser. Discol ○ l ser. Glandu ○ l ser. Histri ○ l ser. Micant ○ l ser. Pallid ○ l ser. Radula ○ l ser. Rhamni ○ l ser. Spreng ○ l ser. Sylvat ○ l ser. Vestit ○ subsect. Rubus | PHALAR ○ arundin ○ [arundi ○ (picta | PLANTA ○ arenar ○ coronop ○ (corono ○ lanceol ○ major ○ (major ○ (pleios ○ maritim ○ (serpen ○ media ○ (media ○ <u>semperv</u> | PRUNUS ○ avium ○ cerasif ○ (atropu ○ (cerasi ○ cerasus ○ domesti ○ (domesti ○ (insiti ○ <u>lauroce</u> ○ mahaleb ○ padus ○ (padus ○ persica ○ <u>serotina</u> ○ spinosa ○ xfrutic | RUBUS ○ caesius ○ (idaeus ○ (idaeus ○ saxatil ○ sect. Coryli ○ sect. Rub ○ subsect. Hiemal ○ l ser. Canesc ○ l ser. Discol ○ l ser. Glandu ○ l ser. Histri ○ l ser. Micant ○ l ser. Pallid ○ l ser. Radula ○ l ser. Rhamni ○ l ser. Spreng ○ l ser. Sylvat ○ l ser. Vestit ○ subsect. Rubus | PHEDIM ○ spuriu | PLATA'RA ○ <u>bifolia</u> ○ chloran | PSEUDA ○ <u>longif</u> | RUBUS ○ caesius ○ (idaeus ○ (idaeus ○ saxatil ○ sect. Coryli ○ sect. Rub ○ subsect. Hiemal ○ l ser. Canesc ○ l ser. Discol ○ l ser. Glandu ○ l ser. Histri ○ l ser. Micant ○ l ser. Pallid ○ l ser. Radula ○ l ser. Rhamni ○ l ser. Spreng ○ l ser. Sylvat ○ l ser. Vestit ○ subsect. Rubus | PHEGOP ○ <u>connect</u> | PLATA'US ○ <u>xhispa</u> | PSEU'FU ○ alba ○ lutea | RUBUS ○ caesius ○ (idaeus ○ (idaeus ○ saxatil ○ sect. Coryli ○ sect. Rub ○ subsect. Hiemal ○ l ser. Canesc ○ l ser. Discol ○ l ser. Glandu ○ l ser. Histri ○ l ser. Micant ○ l ser. Pallid ○ l ser. Radula ○ l ser. Rhamni ○ l ser. Spreng ○ l ser. Sylvat ○ l ser. Vestit ○ subsect. Rubus | PHELIP ○ purpur ○ (purpu ○ ramosa | POA ○ anceps ○ annua ○ [annua ○ [repta ○ bulbosa ○ [bulbo ○ [vivip ○ chaixii ○ compres ○ nemoral ○ (nemora ○ <u>palustr</u> ○ pratens ○ (angust ○ (praten ○ trivial ○ (trivia | PSEU'OR ○ albida ○ (albida ○ <u>paludos</u> ○ (<u>parvif</u> ○ (<u>parvif</u> ○ platani ○ repens ○ sardous ○ (sardou ○ (xatard ○ <u>scelera</u> ○ (<u>sceler</u> ○ tuberos | RUBUS ○ caesius ○ (idaeus ○ (idaeus ○ saxatil ○ sect. Coryli ○ sect. Rub ○ subsect. Hiemal ○ l ser. Canesc ○ l ser. Discol ○ l ser. Glandu ○ l ser. Histri ○ l ser. Micant ○ l ser. Pallid ○ l ser. Radula ○ l ser. Rhamni ○ l ser. Spreng ○ l ser. Sylvat ○ l ser. Vestit ○ subsect. Rubus | PHLEUM ○ nodosu ○ <u>phleoid</u> ○ pratens | POTAMO ○ acutifo ○ <u>compre</u> ○ crispus ○ <u>gramine</u> ○ lucens ○ natans ○ gr. nodosu ○ l nodosus ○ l xfluita ○ obtusif ○ <u>perfoli</u> ○ polygon ○ gr. pusill ○ l berchto ○ l pusillu ○ l <u>trichoi</u> | RUBUS ○ caesius ○ (idaeus ○ (idaeus ○ saxatil ○ sect. Coryli ○ sect. Rub ○ subsect. Hiemal ○ l ser. Canesc ○ l ser. Discol ○ l ser. Glandu ○ l ser. Histri ○ l ser. Micant ○ l ser. Pallid ○ l ser. Radula ○ l ser. Rhamni ○ l ser. Spreng ○ l ser. Sylvat ○ l ser. Vestit ○ subsect. Rubus | PHRAGM ○ austral ○ (austra | POTEN ○ verna | RUBUS ○ caesius ○ (idaeus ○ (idaeus ○ saxatil ○ sect. Coryli ○ sect. Rub ○ subsect. Hiemal ○ l ser. Canesc ○ l ser. Discol ○ l ser. Glandu ○ l ser. Histri ○ l ser. Micant ○ l ser. Pallid ○ l ser. Radula ○ l ser. Rhamni ○ l ser. Spreng ○ l ser. Sylvat ○ l ser. Vestit ○ subsect. Rubus | PHYSAL ○ alkeken ○ [alkeke ○ [franch ○ peruvi | POTENT ○ anglica ○ (anglic ○ gr. argente ○ l argente ○ l neglect ○ erecta ○ (erecta | RUBUS ○ caesius ○ (idaeus ○ (idaeus ○ saxatil ○ sect. Coryli ○ sect. Rub ○ subsect. Hiemal ○ l ser. Canesc ○ l ser. Discol ○ l ser. Glandu ○ l ser. Histri ○ l ser. Micant ○ l ser. Pallid ○ l ser. Radula ○ l ser. Rhamni ○ l ser. Spreng ○ l ser. Sylvat ○ l ser. Vestit ○ subsect. Rubus | PHYSOC ○ <u>opulif</u> | POTENT ○ anglica ○ (anglic ○ gr. argente ○ l argente ○ l neglect ○ erecta ○ (erecta | RUBUS ○ caesius ○ (idaeus ○ (idaeus ○ saxatil ○ sect. Coryli ○ sect. Rub ○ subsect. Hiemal ○ l ser. Canesc ○ l ser. Discol ○ l ser. Glandu ○ l ser. Histri ○ l ser. Micant ○ l ser. Pallid ○ l ser. Radula ○ l ser. Rhamni ○ l ser. Spreng ○ l ser. Sylvat ○ l ser. Vestit ○ subsect. Rubus | PHYTEU ○ gallicu ○ spicatu ○ (occide ○ (spicat | POTENT ○ anglica ○ (anglic ○ gr. argente ○ l argente ○ l neglect ○ erecta ○ (erecta | RUBUS ○ caesius ○ (idaeus ○ (idaeus ○ saxatil ○ sect. Coryli ○ sect. Rub ○ subsect. Hiemal ○ l ser. Canesc ○ l ser. Discol ○ l ser. Glandu ○ l ser. Histri ○ l ser. Micant ○ l ser. Pallid ○ l ser. Radula ○ l ser. Rhamni ○ l ser. Spreng ○ l ser. Sylvat ○ l ser. Vestit ○ subsect. Rubus | PHYTOL ○ <u>america</u> | POTENT ○ anglica ○ (anglic ○ gr. argente ○ l argente ○ l neglect ○ erecta ○ (erecta | RUBUS ○ caesius ○ (idaeus ○ (idaeus ○ saxatil ○ sect. Coryli ○ sect. Rub ○ subsect. Hiemal ○ l ser. Canesc ○ l ser. Discol ○ l ser. Glandu ○ l ser. Histri ○ l ser. Micant ○ l ser. Pallid ○ l ser. Radula ○ l ser. Rhamni ○ l ser. Spreng ○ l ser. Sylvat ○ l ser. Vestit ○ subsect. Rubus | PICEA ○ abies ○ (abies ○ sitchen | POLYCA ○ tetrath ○ (tetrath | RUBUS ○ caesius ○ (idaeus ○ (idaeus ○ saxatil ○ sect. Coryli ○ sect. Rub ○ subsect. Hiemal ○ l ser. Canesc ○ l ser. Discol ○ l ser. Glandu ○ l ser. Histri ○ l ser. Micant ○ l ser. Pallid ○ l ser. Radula ○ l ser. Rhamni ○ l ser. Spreng ○ l ser. Sylvat ○ l ser. Vestit ○ subsect. Rubus | PICRIS ○ hieraci ○ (hierac | PULMON ○ affinis | RUBUS ○ caesius ○ (idaeus ○ (idaeus ○ saxatil ○ sect. Coryli ○ sect. Rub ○ subsect. Hiemal ○ l ser. Canesc ○ l ser. Discol ○ l ser. Glandu ○ l ser. Histri ○ l ser. Micant ○ l ser. Pallid ○ l ser. Radula ○ l ser. Rhamni ○ l ser. Spreng ○ l ser. Sylvat ○ l ser. Vestit ○ subsect. Rubus |
|--|--|---|--|---|---|--|---|---|---|---|----------------------------|--|---|--|----------------------------|--|---|---|----------------------------|--|--|---|---|---|-----------------------------------|---------------------------------------|--|----------------------------|--|---|--------------------------------|----------------------------------|---|---|---|--------------------------|---|--|---|--|---|---|---|---|---|--|---------------------------|---|--|--|---|---|--|--|---------------------------|--|----------------------------------|--|-----------------------------------|------------------------------------|-------------------------------------|--|---|---|---|--|--|--|--|---|-------------------------|--|--|---|--|----------------------------------|---|--|---|---|--|-----------------------------------|---|--|--|--|--|---|----------------------------|--|

| | |
|----------|---|
| surligné | TAXON PROTÉGÉ RÉGLEMENTAIREMENT (niveau européen, national ou régional) |
| surligné | TAXON À PROTECTION DÉPARTEMENTALE |
| souligné | AUTRE TAXON REMARQUABLE (liste rouge, livre rouge) |
| taxon | TAXON DU GROUPE : taxon appartenant au groupe taxonomique indiqué au-dessus du trait vertical |

| | |
|----------|---|
| italique | TAXON EXOTIQUE ENVAHISSANT (avéré, potentiel, émergeant...) |
| (taxon | SOUS-ESPÈCE |
| [taxon | VARIÉTÉ |
| { taxon | FORME |
| # taxon | CULTIVAR |

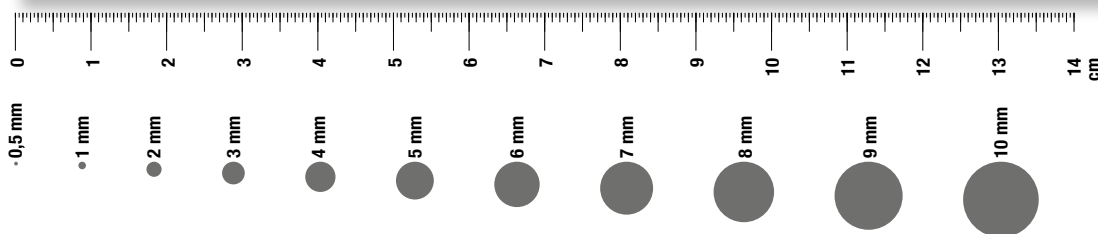
- tuberos
- villos
- (miniat
- (villos
- SOLIDA**
- *canaden*
- *gigante*
- virgaur
- (virgau
- SONCHU**
- *arvensi*
- (*arvens*
- asper
- (asper
- olerace
- SORBUS**
- aria
- aucupar
- (aucupa
- domesti
- tormina
- xthuri
- SORGHU**
- *halepen*
- SPARGA**
- emersum
- (emersu
- erectum
- (erectu
- (neglec
- (oocar
- natans
- SPARTIU**
- junceum
- SPERG'LA**
- *arvensi*
- (arvens
- morison
- *pentand*
- rubra
- SPIRAE**
- *gr. dougla*
- *l dougla*
- *l salicif*
- *l xbillar*
- *l xpseud*
- *hyperi*
- (*obovat*
- *japoni*
- SPIRAN**
- *aestiva*
- *spiral*
- SPIROD**
- polyrhi
- SPOROB**
- *indicus*
- *vaginif*
- STACHY**
- *alpina*
- *annua*
- *arvensi*
- *germani*
- (german
- *palustr*
- *recta*
- (*recta*
- *sylvati*
- STAEHE**
- *dubia*
- STELLA**
- *alsine*
- *gramine*
- *holoste*
- (*apetal*
- (*holost*
- *gr. media*
- *l media*
- *l neglect*
- *l [neglec*
- *l pallida*
- *memorum*
- (montan
- (nemoru
- *palustri*
- STIPA**
- *gallic*
- STUCKE**
- *pectin*
- SUCC'SA**
- *pratens*
- SYMPHO**
- *albus*
- (*laeviga*
- SYMPH'UM**
- *gr. no-bel*
- *l lanceo*
- *l no-bel*
- *l xsalig*
- SYMPHY**
- *gr. aspe*
- *l asperum*
- *l xupland*
- officin
- (officin
- tuberos
- SYRING**
- *vulgari*
- TANACE**
- *corymbo*
- *parthen*
- (*parthe*
- *vulgare*
- TARAXA**
- *sect. Celtic*
- *l nordste*
- *sect. Erythr*
- *l braun-b*
- *l invoca*
- *l laci'loi*
- *l laci'lum*
- *l navarre*
- *l oxonien*
- *l rubicun*
- *l tortilo*
- *sect. Hamat*
- *l hamat'l*
- *l hamif*
- *l macula*
- *l mediterr*
- *l pseudom*
- *l punice*
- *sect. Obova*
- *l ciliatu*
- *l lilio-h*
- *l obovatu*
- *sect. Palust*
- *l ciliare*
- *l hollan*
- *l palust*
- *l udum*
- *sect. Taraxa*
- TAXODI**
- *distich*
- TAXUS**
- *baccata*
- (*baccat*
- (*fastig*
- TEESDA**
- *nudicau*
- TEPHRO**
- *helenit*
- (*heleni*
- TEUCRI**
- *botrys*
- *chamaed*
- *montanu*
- *scorodo*
- THAL'UM**
- *flavum*
- *minus*
- (*praten*
- (*saxati*
- THELYP**
- *palustr*
- THESIU**
- *alpinum*
- (*alpinu*
- *humifus*
- (*divari*
- (*humifu*
- (*pyrenai*
- (*pyrena*
- THLASP**
- *alliace*
- *arvense*
- THYMEL**
- *passeri*
- (*passer*
- THYMUS**
- *gr. polytr*
- *l drucei*
- *l polytr*
- *pulegio*
- (*pulegi*
- (*vestit*
- *vulgari*
- (*vulgar*
- THYSSELI**
- *palustre*
- TILIA**
- *cordata*
- *platyph*
- *xeurop*
- TOLPIS**
- *umbell*
- TORDYL**
- *maximum*
- TORILI**
- *arvensi*
- (*arvens*
- (*anthri*
- (*arvens*
- *japonic*
- (*japoni*
- *nodosa*
- (*nodosa*
- TRACTE**
- *lilio-h*
- *umbel*
- TRAGOP**
- *dubius*
- (*major*
- (*porrifo*
- *pratens*
- (*orient*
- (*praten*
- TRAGUS**
- *racemos*
- TRAPA**
- *natans*
- TRICHO**
- *cespito*
- (*cespit*
- (*german*
- TRIFOL**
- *angusti*
- *arvense*
- (*arvens*
- (*gracil*
- *aureum*
- *campest*
- (*campes*
- (*minus*
- *dubium*
- (*fragife*
- (*glomera*
- *hybridu*
- (*elegan*
- (*hybrid*
- (*incarna*
- (*incarn*
- (*moline*
- *medium*
- (*medium*
- *micran*
- *montanu*
- (*montan*
- *ochrole*
- *ornitho*
- *patens*
- *pratens*
- (*praten*
- (*sativu*
- *repens*
- (*repens*
- *rubens*
- (*scabrum*
- (*scabru*
- *spadice*
- (*squamo*
- *striatu*
- *subterr*
- (*subter*
- TRIGON**
- *alba*
- *altissi*
- *officin*
- TRINIA**
- *glauca*
- (*glauca*
- TRIPLE**
- *inodor*
- TRISSET**
- *flavesc*
- (*flaves*
- TRITIC**
- *aestivu*
- (*aestiv*
- (*spelta*
- *turgid*
- (*durum*
- TROCDA**
- *vertic*
- TROLLI**
- *europae*
- TUBERA**
- *guttat*
- TULIPA**
- *sylvest*
- (*austra*
- TURGEN**
- *latifol*
- TURRIT**
- *glabra*
- TUSSIL**
- *farfara*
- TYPHA**
- *angusti*
- *latifol*
- *xglauca*
- ULEX**
- *europae*
- (*europa*
- *minor*
- ULMUS**
- *glabra*
- (*laevis*
- *minor*
- UMBILI**
- *rupestr*
- URTICA**
- *dioica*
- (*dioica*
- (*galeop*
- *urens*
- UTRICU**
- *austral*
- *minor*
- VACCAR**
- *hispani*
- VACCIN**
- *myrtil*
- *gr. oxycoc*
- *l microca*
- (*oxycoc*
- *uligino*
- (*micro*
- VALER'NA**
- *dioica*
- (*dioica*
- *officin*
- (*offici*
- (*repens*
- (*sambuc*
- (*tenuif*
- (*tripter*
- VALER'NE**
- *coronat*
- (*pumila*
- *dentata*
- (*dentat*
- (*rimosa*
- *eriocar*
- (*eriocar*
- *locusta*
- (*carina*
- (*locust*
- VANDEN**
- *specio*
- VENTEN**
- *dubia*
- VERATR**
- *album*
- (*album*
- VERBAS**
- *blattar*
- *lychnit*
- (*album*
- (*lychn*
- *nigrum*
- (*nigrum*
- *gr. phlomo*
- *l densifl*
- *l phlomo*
- *pulveru*
- (*sinuatu*
- *thapsus*
- (*montan*
- (*thapsu*
- *virgatu*
- VERBEN**
- *bonari*
- *officin*
- *palustr*
- *gr. rivi*
- *l reichen*
- *l rivinia*
- *rupest*
- *gr. tric*
- *l arvensi*
- *l [arvens*
- *l [contem*
- *l tricolo*
- *l (saxati*
- *l (tricol*
- *xwittr*
- VISCAR**
- *vulgar*
- (*vulgar*
- VISCUM**
- *album*
- (*abieti*
- (*album*
- (*austri*
- VITIS**
- *vinifer*
- (*vinifer*
- VULPIA**
- *bromoi*
- (*ciliata*
- (*ciliat*
- *membra*
- *myuros*
- *unilate*
- WAHLEN**
- *hederac*
- XANTHI**
- *orienta*
- (*italic*
- (*orient*
- (*strumar*
- XTRITICO**
- *rimpau*
- ZANNIC**
- *palustr*
- (*palust*
- ZEA**
- *mays*

TAXONS À PROTECTION DÉPARTEMENTALE

- Anthericum liliago : 23, 87
- Asplenium scolopendrium : 23, 87
- Carex pendula : 23
- Colchicum autumnale : 87
- Digitalis lutea : 23
- Equisetum ramosissimum : 87
- Erica scoparia : 23
- Gymnocarpium dryopteris : 23, 87
- Helleborus foetidus : 23
- Hippocrepis comosa : 23, 87
- Hyacinthoides non-scripta : 19
- Hypericum androsaemum : 87
- Lysimachia nummularia : 23, 87
- Oreopteris limbosperma : 23, 87
- Phegopteris connectilis : 23, 87
- Rubia peregrina : 87
- Stachys recta : 23

| | | | |
|-----------------|---|-----------------|---|
| surligné | TAXON PROTÉGÉ RÉGLEMENTAIREMENT (niveau européen, national ou régional) | <i>italique</i> | TAXON EXOTIQUE ENVAHISSANT (avéré, potentiel, émergeant...) |
| surigné | TAXON À PROTECTION DÉPARTEMENTALE | (taxon | SOUS-ESPÈCE |
| souigné | AUTRE TAXON REMARQUABLE (HORS TAXONS PROTÉGÉS) (liste rouge, livre rouge) | [taxon | VARIÉTÉ |
| I taxon | TAXON DU GROUPE : taxon appartenant au groupe taxonomique indiqué au-dessus du trait vertical | { taxon | FORME |
| | | # taxon | CULTIVAR |

RÈGLES DE MESURE



Conservatoire botanique national du Massif central

Siège
Le Bourg
43230 CHAVANIAC-LAFAYETTE
Téléphone : 04 71 77 55 65
Télécopie : 04 71 77 55 74
Courriel : conservatoire.siege@cbnmc.fr
Site Internet : www.cbnmc.fr

Antenne Limousin
38 bis, avenue de la Libération
87000 LIMOGES
Téléphone : 05 55 77 51 47

Antenne Rhône-Alpes
Maison du Parc
Moulin de Virieu - 2, rue Benay
42410 PÉLUSSIN
Téléphone : 04 74 59 17 93

