



Inventaire de la flore vasculaire d'Auvergne

Bordereau de relevé - Version 2018 / 01

Réf. maille :

N° relevé :

DATE (OU PÉRIODE) : / / AU / /

N° CBNMC

OBSERVATEUR(S) :

&
 &

SITUATION

Commune :

Localisation :

Joindre impérativement un pointage de votre relevé sur une carte

Pointage GPS :

DONNÉES STATIONNELLES

Roche mère :

Altitude (m) : inf. : sup. :

Pente moyenne (°) :

Exposition : N NO NE S SO SE O E

MILIEUX

1 Zones urbaines

- 1 Murs et bâtiments
- 2 Parcs et jardins
- 3 Zones industrielles, friches rudérales, décombres et dépotoirs
- 4 Cimetières
- 5 Autres (préciser : _____)

2 Routes, chemins, voies ferrées, carrières

- 1 Bords de routes et de chemins (bermes, fossés, talus)
- 2 Voies ferrées et dépendances ferroviaires
- 3 Carrières
- 4 Autres (préciser : _____)

3 Cultures, jachères, friches

- 1 Céréales, protéagineux et oléagineux
- 2 Cultures sarclées et maraîchères
- 3 Autres cultures annuelles (préciser : _____)
- 4 Vignes
- 5 Vergers
- 6 Jachères et friches post-culturelles
- 7 Autres (préciser : _____)

4 Eaux et bordures aquatiques

- 1 Sources et ruisselets
- 2 Eaux courantes (ruisseaux, rivières et fleuves)
- 3 Eaux stagnantes (mares, étangs, lacs...)
- 4 Bordures aquatiques basses
- 5 Bordures aquatiques hautes (roselières, magnocariçaies...)
- 6 Sables et graviers des cours d'eau
- 7 Fossés, déversoirs et canaux
- 8 Mares temporaires
- 9 Autres (préciser : _____)

5 Tourbières, prairies humides et mégaphorbiaies

- 1 Bas-marais, tourbières plates et de transition
- 2 Tourbières hautes et landes tourbeuses
- 3 Prairies humides
- 4 Mégaphorbiaies collinéennes à montagnardes
- 5 Autres (préciser : _____)

6 Pelouses et prairies sèches à mésophiles

- 1 Pelouses calcicoles et basiphiles
- 2 Nardaies et pelouses acidiphiles
- 3 Prairies de fauche
- 4 Prairies pâturées
- 5 Autres (préciser : _____)

7 Landes, fourrés et haies

- 1 Landes collinéennes et montagnardes
- 2 Ourlets herbacés de recolonisation pastorale
- 3 Fourrés
- 4 Haies
- 5 Landes subalpines
- 6 Autres (préciser : _____)

8 Lisières et forêts

- 1 Forêts riveraines et alluviales
- 2 Forêts de ravins
- 3 Chênaies, charmaies et autres forêts collinéennes
- 4 Hêtraies, sapinières et autres forêts montagnardes
- 5 Pinèdes
- 6 Plantations (préciser : _____)
- 7 Lisières, clairières et coupes
- 8 Pistes, laies et layons forestiers
- 9 Autres (préciser : _____)

9 Rochers, éboulis et sables

- 1 Rochers, dalles et falaises
- 2 Éboulis
- 3 Sables et arènes
- 5 Scorées volcaniques
- 4 Autres (préciser : _____)

REMARQUES DIVERSES

TAXONS SUPPLÉMENTAIRES

Nom	Milieux	Effectif*	Indigénat	*Échelle d'effectif
				De 1 à 9 ind. : 1
				De 10 à 99 ind. : 2
				Plus de 100 ind. : 3

○ pseudoc	○ rubra	CIRCAE	○ scorpio	CYCLAM	○ (carota	DRYOPT	○ anagall	ERIOPH	○ (rostko
○ pulicar	CEPH'RIA	○ alpina	○ varia	○ hederif	DELPHI	○ affinis	○ nutans	○ angust	○ salisbu
○ punctat	○ leucant	○ (alpina	CORRIG	CYDONI	○ ajacis	○ (affini	○ angusti	○ (angus	○ gr. strict
○ remota	CERA'CAP	○ lutetia	○ littora	○ oblonga	○ consol	○ (borrer	○ gracile	○ (angust	○ cebenne
○ riparia	○ clavicu	○ xinterm	CORTAD	CYMBAL	○ (consol	○ (cambre	○ latifol	○ brachy	○ nemoros
○ rostrat	CERA'LOA	CIRSIU	○ sel'loa	○ muralis	○ (consol	○ carthus	○ vaginat	○ ciliatu	○ pectina
○ gr. spicat	○ cathar	○ acaulo	CORYDA	CYNODO	○ cristat	○ cristat	○ stricta	○ collinu	○ tetraqu
○ pairae	○ sitche	○ arvens	○ solida	○ dactylo	○ (cespit	○ dilatat	○ cicutar	○ dodonae	EVONYM
○ spicata	CERA'PHA	○ dissect	CORYLU	○ [dactyl	○ (cespit	○ expansa	○ (cicuta	○ dodona	○ europae
○ stenop	○ falcatu	○ eriopho	○ avellan	○ [dactyl	○ (pseudal	○ filix-m	○ (cicuta	○ duriaei	○ latifol
○ strigos	CERA'PHY	○ erisith	CORYNE	CYNOGL	○ (parvif	○ oreades	ERUCA	○ hirsutu	○ sativa
○ sylvati	○ demersu	○ palustr	○ canesce	○ creticu	○ (subtri	○ remota	ERUCAS	○ lanceol	○ obscuro
○ (sylvat	○ submers	○ rivular	COTA	CYNOSU	○ media	DYSPHA	○ montanu	○ (roseum	○ botrys
○ tomento	CERAST	○ tuberos	○ tincto	○ cristat	○ media	○ ambros	○ (nastur	○ roseum	ERVUM
○ umbrosa	○ alpinum	○ vulgare	COTONE	○ echinat	DESCUR	○ obscuru	○ (nastur	○ (roseum	○ gracil
○ [umbros	○ arvens	○ (vulgar	○ franche	CYPERU	○ sophia	ECHI'LOA	○ (nastur	○ (roseum	○ tetrasp
○ vaginat	○ (arvens	○ (vulgar	○ gr. intege	○ eragros	○ (sophia	○ crus-ga	ERYNGI	○ (lamyi	○ campest
○ vesicar	○ strict	○ (vulgar	○ intege	○ esculen	DIANTH	○ muricat	○ (campest	○ (lamyi	ERYSIM
○ vulpina	○ (brachyp	○ (umbell	○ intege	○ (esculen	○ armeria	○ [microsc	○ (campest	○ (lamyi	○ cheiri
CARLIN	○ (brachy	○ umbell	○ pyrena	○ (esculen	○ (armeri	ECHINA	ERYTHRA	○ (lamyi	○ (arveroide
○ acanthi	○ diffusu	CLADIU	○ toment	○ (esculen	○ barbatu	○ capitat	○ guttat	○ (arveroide	○ arvern
○ (acanth	○ fontanu	○ mariscu	○ xinterm	○ flaves	○ carthus	ECHI'OPS	ERYTHRO	○ (arvern	○ (costei
○ (cynara	○ (vulgar	CLEMAT	CRASSU	○ fuscus	○ (carthu	○ sphaero	○ dens-ca	○ (costei	○ auquier
○ bieber	○ glomera	○ vitalba	○ helmsi	○ longus	○ deltoid	○ (sphaer	ESCHSC	○ auquier	○ billyi
○ (biebe	○ gr. pumi	CLINOP	○ tillaea	○ micheli	○ graniti	ECHIUM	○ califor	○ billyi	○ brevip
○ vulgari	○ glutino	○ acinos	○ vaillan	CYPRIP	○ gratian	○ vulgare	EUPATO	○ filifor	○ (cannab
CARPIN	○ pumilum	○ grandi	CRATAE	○ calceol	○ hyssopi	○ [vulgar	○ cannabi	○ (cannab	○ het'chys
○ betulus	○ semidec	○ nepeta	○ german	CYSTOP	○ (pseuso	EGERIA	○ (cannab	○ (cannab	○ lemanii
CARTHA	○ ramosis	○ (nepeta	○ laeviga	○ gr. frag	○ superbu	○ densa	EUPHOR	○ (cannab	○ longifo
○ lanatus	○ tomento	○ [glandu	○ monogyne	○ dickiea	○ (autumn	ELATIN	○ amygdal	○ (cannab	○ margina
○ mitiss	CERVAR	○ [nepeta	○ xmedia	○ fragili	○ (superb	○ alsinas	○ (amygda	○ (cannab	○ (margin
CARUM	○ rivini	○ (nepeta	CREPIS	CYTISU	○ (fragil	○ hexandr	○ (chamaes	○ (cannab	○ ovina
○ carvi	CHAE'LES	○ (ascend	○ biennis	○ decumbe	DICHOR	○ (hydropi	○ (chamae	○ (cannab	○ (guestf
CASTAN	○ japonic	○ (sylvat	○ capilla	○ multifi	○ carvif	EQUISE	○ (chamae	○ (cannab	○ gr. rubr
○ sativa	CHAE'NUM	○ vulgare	○ conyzif	○ oromedi	DIGITA	○ arvense	○ (chamae	○ (cannab	○ het'alla
CATABR	○ minus	○ (vulgar	○ foetida	○ scopari	○ [purpur	○ fluviat	○ (chamae	○ (cannab	○ microp
○ aquatic	○ (minus	COCHLE	○ (foetid	○ (revert	DIGITAL	○ hyemale	○ (chamae	○ (cannab	○ nigresc
CATAPO	○ origan	○ pyrenai	○ (foetid	○ (scopar	○ grandif	○ (hyemal	○ (chamae	○ (cannab	○ rivular
○ rigidum	○ origan	COINCY	○ (rhoead	○ (scopar	○ lutea	○ palustr	○ (chamae	○ (cannab	○ (rivula
CAUCAL	CHAERO	○ monensi	○ lampan	○ (striat	○ purpure	○ palustr	○ (chamae	○ (cannab	○ rubra
○ platyca	○ aureum	○ (cheira	○ mollis	DACT'LIS	DIGITAR	○ (walter	○ (chamae	○ (cannab	○ juncea
CEDRUS	○ hirsutu	COLCHI	○ paludos	○ glomera	○ ischaem	○ (walter	○ (chamae	○ (cannab	○ (rubra
○ atlanti	○ hirsutu	○ autumna	○ pulchra	○ (glomer	○ sanguin	○ (walter	○ (chamae	○ (cannab	○ trichop
CENTRA	○ temulum	COLLUM	○ sancta	○ (hispani	DIOSCO	○ (walter	○ (chamae	○ (cannab	○ (asperi
○ calcitr	○ villars	○ grandif	○ (nemaus	○ (lobata	○ commun	○ (walter	○ (chamae	○ (cannab	○ (tricho
○ ruber	○ [villar	COLUTE	○ setosa	DACT'RHI	DIPLOT	○ quinque	○ (chamae	○ (cannab	ERICI
○ (ruber	CHAM'LUM	○ arbores	○ vesicar	○ elata	○ muralis	ELEUSI	○ (chamae	○ (cannab	○ illiri
CENT'REA	○ nobile	COMARU	○ (taraxa	○ (sesqui	○ (murali	○ indica	○ (chamae	○ (cannab	○ lathyri
○ calcitr	CHELID	○ palust	CROCUS	○ fuchsi	○ tenuifo	ELEODEA	○ (chamae	○ (cannab	○ loreyi
○ subg. Jacea	○ majus	CONIUM	○ vernus	○ (fuchsi	○ viminea	○ canad	○ (chamae	○ (cannab	○ maculat
○ decipi	CHENO'AS	○ maculat	CRUC,ANE	○ (psychr	DIPSAC	○ nuttall	○ (chamae	○ (cannab	○ peplus
○ (debeau	○ hybrid	○ [macula	○ angust	○ (incarna	○ fullonu	ELYMUS	○ (chamae	○ (cannab	○ (scopari
○ (decipi	○ murale	CONOPO	CRUC,ATA	○ (incarna	○ pilosus	○ caninu	○ (chamae	○ (cannab	○ (scopar
○ (microp	CHENO'Um	○ majus	○ glabra	○ (incarna	DITTRI	ELYTRI	○ (chamae	○ (cannab	○ (scopar
○ (nemora	○ gr. album	○ (majus	○ laevipe	○ (incarna	○ graveol	○ pilosa	○ (chamae	○ (cannab	○ (scopar
○ (ruscin	○ album	○ (majus	○ pedemon	○ (incarna	DORONI	○ viresce	○ (chamae	○ (cannab	○ (scopar
○ (thueil	○ album	CONRIN	○ pedemo	○ (incarna	○ austria	ERANTH	○ (chamae	○ (cannab	○ (scopar
○ jacea	○ album	○ orient	○ [pedemo	○ (incarna	○ pardali	○ hyemali	○ (chamae	○ (cannab	○ (scopar
○ (jacea	○ (opulif	CONVAL	○ [procum	○ (incarna	DRABA	ERICA	○ (chamae	○ (cannab	○ (scopar
○ (timbal	○ strictu	○ majalis	CRUPIN	○ (incarna	○ aizoid	○ cinerea	○ (chamae	○ (cannab	○ (scopar
○ nigra	○ ficifol	CONVOL	○ vulgari	○ (incarna	○ muralis	○ scopari	○ (chamae	○ (cannab	○ (scopar
○ maculos	○ vulvari	○ arvensi	CRYPISI	○ (incarna	○ verna	○ pilosa	○ (chamae	○ (cannab	○ (scopar
○ panicul	CHONDR	○ cantabr	○ alopecu	DAMASO	EMPETR	○ viresce	○ (chamae	○ (cannab	○ (scopar
○ (panicu	○ juncea	○ lineatu	CRYPTOG	○ alisma	○ nigrum	○ (viresce	○ (chamae	○ (cannab	○ (scopar
○ pectina	CHRY'SPL	○ sepium	○ crispa	DANTHO	○ (hermap	○ (viresce	○ (chamae	○ (cannab	○ (scopar
○ scabios	○ alterni	CORALL	CUSCUT	○ decumbe	○ (nigrum	○ (viresce	○ (chamae	○ (cannab	○ (scopar
○ (scabio	○ opposit	○ trifid	○ gr. campes	○ (decumb	EPHEDR	○ (viresce	○ (chamae	○ (cannab	○ (scopar
○ solstit	CICEND	CORNUS	○ campest	DAPHNE	○ major	ERIGER	○ (chamae	○ (cannab	○ (scopar
CENT'RUI	○ filifor	○ mas	○ (decumb	○ laureol	○ (major	○ acris	○ (chamae	○ (cannab	○ (scopar
○ erythra	CICHOR	○ sanguin	DASYL	○ (laureo	○ (major	○ (seroti	○ (chamae	○ (cannab	○ (scopar
○ [erythra	○ intybus	○ (sanguin	DRYM'IS	○ mezereu	○ (major	○ alpinus	○ (chamae	○ (cannab	○ (scopar
○ pulchel	CICUTA	○ (sanguin	○ rupest	DATURA	○ (major	○ annuus	○ (chamae	○ (cannab	○ (scopar
CEPHAL	○ virosa	CORONI	○ rupest	○ stramon	○ (major	○ (annuus	○ (chamae	○ (cannab	○ (scopar
○ damason	○ (virosa	○ minima	DRYM'OA	DAUCUS	○ (major	○ (septen	○ (chamae	○ (cannab	○ (scopar
○ longifo	○ (virosa	○ (minima	○ sylvat	○ carota	○ (major	○ blakei	○ (chamae	○ (cannab	○ (scopar

surligné	TAXON PROTÉGÉ RÉGLEMENTAIREMENT (niveau européen, national ou régional)
surligné	TAXON À PROTECTION DÉPARTEMENTALE
souligné	AUTRE TAXON REMARQUABLE (liste rouge, livre rouge)
taxon	TAXON DU GROUPE : taxon appartenant au groupe taxonomique indiqué au-dessus du trait vertical

italique	TAXON EXOTIQUE ENVAHISSANT (avéré, potentiel, émergent...)
(taxon	SOUS-ESPÈCE
[taxon	VARIÉTÉ
{ taxon	FORME
# taxon	CULTIVAR

FOURRA ○ alpina	○ gr. pumilus ○ anisoph ○ pumilum	GLYCER ○ gr. fluuta ○ declina ○ fluitan	○ sphondy ○ (elegans ○ (sphond ○ [sphond	HORNUN ○ <u>petraea</u> ○ <u>procum</u> ○ <u>paucif</u>	○ <u>spiraei</u> IRIS ○ foetidi ○ germani ○ latifol ○ pseudac	○ basalti ○ [basalt ○ [forezi	LEERSI ○ oryzoid ○ [cathar	○ cathart ○ [cathar
FRAGAR ○ moschat ○ vesca ○ viridis ○ (viridi ○ xananas	○ pubesc ○ [pumilu ○ timeroy ○ rotundi ○ saxatil ○ <u>tricorn</u>	GNAPHA ○ <u>norveg</u> ○ <u>supinu</u> ○ sylvat ○ uligino	HERMIN ○ monorc	HOTTON ○ <u>palustr</u>	HUMULU ○ lupulus	KOELER ○ gr. pyra ○ macran ○ (macran ○ pyramid ○ (pyrami ○ vallesi ○ (valles	LEGOUS ○ <u>hybrida</u> ○ speculu	○ strictu ○ (strict ○ <u>tenuifo</u> ○ <u>trigynu</u> ○ usitati ○ (angust ○ (usitat
FRANGU ○ alnus ○ (alnus	○ uligino ○ verum ○ (verum ○ (wirtge	GOODYE ○ repens	HESPER ○ matrona ○ (matron ○ (nivea	HUPERZ ○ selago ○ (selago	ISOETE ○ echinos ○ lacustr	LABURN ○ anagyro	LIPAND ○ polypsp	○ polypsp
FRAXIN ○ angusti ○ (angust ○ excelsi ○ ornus ○ (ornus	GASPAR ○ <u>peuced</u>	GRATIO ○ officin	HIERAC ○ gr. acumi ○ acumin ○ aurule ○ aviico ○ tortif	HYA'OIDES ○ hispan ○ non-scr ○ xmassa	ISOLEP ○ <u>fluita</u> ○ setacea	LACTUC ○ alpina ○ murali ○ perenni ○ plumie ○ <u>saligna</u> ○ serriol ○ viminea ○ (chondr ○ virosa	LEONTO ○ <u>crispus</u> ○ hispidu ○ (hispid ○ saxatil ○ (saxati	LITHOS ○ officin
FRITIL ○ meleagr	GASTRI ○ ventric	GROENL ○ <u>densa</u>	○ gr. amplex ○ amplexi ○ aurule ○ aviiico ○ tortif	HYDR'CHA ○ <u>morsus-</u>	ISOPYR ○ thalic	LEONUR ○ <u>cardiac</u>	LITTOR ○ uniflor	
FUMANA ○ procumb	GAUDIN ○ fragili	GYMNAD ○ conopse ○ densif ○ nigra ○ (austri ○ odorati	○ gr. amplex ○ amplexi ○ aurule ○ aviiico ○ tortif	HYDR'COT ○ vulgari	JACOBA ○ adonid ○ gr. aquati ○ <u>aquati</u> ○ errati ○ erucif ○ (eruci	LEPIDI ○ african ○ (african ○ campest ○ densif ○ <u>didymu</u> ○ draba ○ gramini ○ heterop ○ <u>latifol</u> ○ ruderal ○ squama ○ <u>virgini</u>	LOBELI ○ <u>urens</u>	
FUMARI ○ muralis ○ (boraei ○ (murali ○ officin ○ (offici ○ (wirtge ○ <u>vaillan</u>	GENIST ○ anglica ○ <u>germani</u> ○ pilosa ○ (pilosa ○ sagitta ○ tinctor	GYMNOCA ○ dryopte ○ roberti	○ gr. amplex ○ amplexi ○ aurule ○ aviiico ○ tortif	HYLOTE ○ maximu ○ teleph	JASION ○ <u>crispa</u> ○ (arvern ○ laevis ○ montana	LAGARO ○ <u>major</u>	LOGFIA ○ <u>gallic</u> ○ minima	
GAGEA ○ bohemio ○ lutea ○ pratens ○ villosa	GENT'ANA ○ <u>cruciat</u> ○ lutea ○ (lutea ○ pneumon ○ <u>verna</u> ○ <u>verna</u>	GYMNOCA ○ dryopte ○ roberti	○ gr. glauci ○ brevip ○ conjug ○ fragil ○ glaucinu ○ pal'ifr ○ pal'ulu ○ petiol ○ prasin	HYLOSCY ○ leucop ○ vulgar ○ xmirab	JASMIN ○ frutica	LAMIUM ○ album ○ amplexi ○ galeobd ○ (montan ○ hybridu ○ maculat ○ purpure	LOLIUM ○ multifl ○ perenne ○ <u>rigidum</u> ○ (rigidu ○ <u>temulen</u> ○ xbouchea	
GALANT ○ nivalis	GENT'NOP ○ ciliat	HEDERA ○ helix	○ gr. insuet ○ cuspid ○ insuetu ○ gr. inuloi ○ aurige ○ laureo ○ obliqu ○ occita ○ vagum ○ vascon ○ virgul	HYPERI ○ androsa ○ <u>calycin</u> ○ <u>elodes</u> ○ hirsutu ○ humifus ○ linarii ○ maculat ○ (macula ○ (obtus ○ montanu ○ perfora ○ [angust ○ curvid ○ dumosu ○ obliqu ○ occita ○ vagum ○ vascon ○ x(deseta	JUGLAN ○ nigra ○ regia	LEUCA'UM ○ monspel ○ gr. vulgar ○ delarbr ○ ircutia ○ (ircuti ○ vulgare	LONCOM ○ pyrena ○ (pyren	
GALATE ○ <u>linosy</u> ○ (linosy	GERANI ○ columbi ○ dissect ○ lucidum ○ molle ○ nodosum ○ phaeum ○ [phaeum ○ pratens ○ purpur ○ pusillu ○ pyrenai ○ (pyrena ○ roberti ○ rotundi ○ sanguin ○ sylvati	HELIA'UM ○ apennin ○ (apenni ○ nummula ○ salicif ○ xsulphu	○ gr. insuet ○ cuspid ○ insuetu ○ gr. inuloi ○ aurige ○ laureo ○ obliqu ○ occita ○ vagum ○ vascon ○ virgul	HYSSOP ○ officin	JUNGLAN ○ nigra ○ regia	LEUCOJ ○ <u>vernum</u>	LOTUS ○ angusti ○ cornicu ○ (alpinu ○ (cornic ○ <u>glaber</u> ○ <u>hirsut</u> ○ <u>mariti</u> ○ <u>hirsu</u> ○ peduncu	
GALINIS ○ parvifi ○ <u>quadrir</u>	GEUM ○ montanu ○ rivale ○ urbanum	HELIA'US ○ annuus ○ gr. <u>tubero</u> ○ <u>tuberos</u> ○ <u>xlaetif</u>	○ gr. insuet ○ cuspid ○ insuetu ○ gr. inuloi ○ aurige ○ laureo ○ obliqu ○ occita ○ vagum ○ vascon ○ virgul	IBERIS ○ <u>amara</u>	JUNCUS ○ acutifil ○ alpinoa ○ (alpino ○ articu ○ (articu ○ bufoni ○ [bufoni ○ [conges ○ bulbosu ○ (bulbos ○ (kochii ○ capitat ○ compress ○ conglom ○ effusus ○ filifor ○ gerardi ○ inflexu ○ pygmaeu ○ squarro ○ <u>subnodu</u> ○ <u>tenagei</u> ○ <u>tenuis</u> ○ (tenuis ○ trifidu	LARIX ○ articu ○ decidua ○ (decidu ○ kaempfe ○ xmarsch	LONONCE ○ <u>alpigén</u> ○ (alpigé ○ etrusca ○ japoni ○ nigra ○ pericyl ○ (pericl ○ xylosté	
GALIVM ○ aparine ○ (aparin ○ (spuriu ○ boreale ○ <u>glaucum</u> ○ gr. moll ○ album ○ corrudi ○ lucidum ○ molligu ○ obliquu ○ odoratu ○ gr. palu ○ elonga ○ palustr ○ gr. parisi ○ <u>divari</u> ○ parisie ○ [leiocar ○ [parisi	GLADIO ○ imbric ○ italicu	HELIA'US ○ annuus ○ gr. <u>tubero</u> ○ <u>tuberos</u> ○ <u>xlaetif</u>	○ gr. insuet ○ cuspid ○ insuetu ○ gr. inuloi ○ aurige ○ laureo ○ obliqu ○ occita ○ vagum ○ vascon ○ virgul	ILEX ○ aquifol	LATHRA ○ clandes ○ conglom ○ effusus ○ filifor ○ gerardi ○ inflexu ○ pygmaeu ○ squarro ○ <u>subnodu</u> ○ <u>tenagei</u> ○ <u>tenuis</u> ○ (tenuis ○ trifidu	LIGULA ○ latifol ○ [latifo	LUNARI ○ <u>annua</u> ○ rediviv	
GALIVM ○ aparine ○ (aparin ○ (spuriu ○ boreale ○ <u>glaucum</u> ○ gr. moll ○ album ○ corrudi ○ lucidum ○ molligu ○ obliquu ○ odoratu ○ gr. palu ○ elonga ○ palustr ○ gr. parisi ○ <u>divari</u> ○ parisie ○ [leiocar ○ [parisi	GLAUCI ○ cornicu ○ (cornicu ○ flavum	HELIA'US ○ annuus ○ gr. <u>tubero</u> ○ <u>tuberos</u> ○ <u>xlaetif</u>	○ gr. insuet ○ cuspid ○ insuetu ○ gr. inuloi ○ aurige ○ laureo ○ obliqu ○ occita ○ vagum ○ vascon ○ virgul	ILLECE ○ <u>vertici</u>	LATHRA ○ clandes ○ conglom ○ effusus ○ filifor ○ gerardi ○ inflexu ○ pygmaeu ○ squarro ○ <u>subnodu</u> ○ <u>tenagei</u> ○ <u>tenuis</u> ○ (tenuis ○ trifidu	LIGULU ○ lucidu ○ ovalifo ○ vulgare	LUNARI ○ <u>annua</u> ○ rediviv	
GALIVM ○ aparine ○ (aparin ○ (spuriu ○ boreale ○ <u>glaucum</u> ○ gr. moll ○ album ○ corrudi ○ lucidum ○ molligu ○ obliquu ○ odoratu ○ gr. palu ○ elonga ○ palustr ○ gr. parisi ○ <u>divari</u> ○ parisie ○ [leiocar ○ [parisi	GLEBIONI ○ segetum	HELIA'US ○ annuus ○ gr. <u>tubero</u> ○ <u>tuberos</u> ○ <u>xlaetif</u>	○ gr. insuet ○ cuspid ○ insuetu ○ gr. inuloi ○ aurige ○ laureo ○ obliqu ○ occita ○ vagum ○ vascon ○ virgul	IMPATI ○ <u>balfour</u> ○ <u>capensi</u> ○ <u>glandul</u> ○ noli-ta ○ <u>parvifl</u>	LATHRA ○ clandes ○ conglom ○ effusus ○ filifor ○ gerardi ○ inflexu ○ pygmaeu ○ squarro ○ <u>subnodu</u> ○ <u>tenagei</u> ○ <u>tenuis</u> ○ (tenuis ○ trifidu	LIGULU ○ lucidu ○ ovalifo ○ vulgare	LUNARI ○ <u>annua</u> ○ rediviv	
GALIVM ○ aparine ○ (aparin ○ (spuriu ○ boreale ○ <u>glaucum</u> ○ gr. moll ○ album ○ corrudi ○ lucidum ○ molligu ○ obliquu ○ odoratu ○ gr. palu ○ elonga ○ palustr ○ gr. parisi ○ <u>divari</u> ○ parisie ○ [leiocar ○ [parisi	GLECHO ○ hederac	HELIA'US ○ annuus ○ gr. <u>tubero</u> ○ <u>tuberos</u> ○ <u>xlaetif</u>	○ gr. insuet ○ cuspid ○ insuetu ○ gr. inuloi ○ aurige ○ laureo ○ obliqu ○ occita ○ vagum ○ vascon ○ virgul	INULA ○ bifrons ○ <u>britann</u> ○ conyza ○ heleniu ○ <u>montana</u> ○ <u>salicin</u>	LATHRA ○ clandes ○ conglom ○ effusus ○ filifor ○ gerardi ○ inflexu ○ pygmaeu ○ squarro ○ <u>subnodu</u> ○ <u>tenagei</u> ○ <u>tenuis</u> ○ (tenuis ○ trifidu	LIGULU ○ lucidu ○ ovalifo ○ vulgare	LUNARI ○ <u>annua</u> ○ rediviv	
GALIVM ○ aparine ○ (aparin ○ (spuriu ○ boreale ○ <u>glaucum</u> ○ gr. moll ○ album ○ corrudi ○ lucidum ○ molligu ○ obliquu ○ odoratu ○ gr. palu ○ elonga ○ palustr ○ gr. parisi ○ <u>divari</u> ○ parisie ○ [leiocar ○ [parisi	GLEDIT ○ <u>triacan</u>	HELIA'US ○ annuus ○ gr. <u>tubero</u> ○ <u>tuberos</u> ○ <u>xlaetif</u>	○ gr. insuet ○ cuspid ○ insuetu ○ gr. inuloi ○ aurige ○ laureo ○ obliqu ○ occita ○ vagum ○ vascon ○ virgul	IMPER'O ○ ostruth	LATHRA ○ clandes ○ conglom ○ effusus ○ filifor ○ gerardi ○ inflexu ○ pygmaeu ○ squarro ○ <u>subnodu</u> ○ <u>tenagei</u> ○ <u>tenuis</u> ○ (tenuis ○ trifidu	LIGULU ○ lucidu ○ ovalifo ○ vulgare	LUNARI ○ <u>annua</u> ○ rediviv	
GALIVM ○ aparine ○ (aparin ○ (spuriu ○ boreale ○ <u>glaucum</u> ○ gr. moll ○ album ○ corrudi ○ lucidum ○ molligu ○ obliquu ○ odoratu ○ gr. palu ○ elonga ○ palustr ○ gr. parisi ○ <u>divari</u> ○ parisie ○ [leiocar ○ [parisi	GLOBUL ○ <u>bisnaga</u>	HERACL ○ <u>mantega</u> ○ gr. spho ○ sibiricu ○ (sibiric	○ gr. insuet ○ cuspid ○ insuetu ○ gr. inuloi ○ aurige ○ laureo ○ obliqu ○ occita ○ vagum ○ vascon ○ virgul	INULA ○ bifrons ○ <u>britann</u> ○ conyza ○ heleniu ○ <u>montana</u> ○ <u>salicin</u>	LATHRA ○ clandes ○ conglom ○ effusus ○ filifor ○ gerardi ○ inflexu ○ pygmaeu ○ squarro ○ <u>subnodu</u> ○ <u>tenagei</u> ○ <u>tenuis</u> ○ (tenuis ○ trifidu	LIGULU ○ lucidu ○ ovalifo ○ vulgare	LUNARI ○ <u>annua</u> ○ rediviv	

surligné	TAXON PROTÉGÉ RÉGLEMENTAIRE (niveau européen, national ou régional)	italique	TAXON EXOTIQUE ENVAHISSANT (avéré, potentiel, émergent...)
surligné	TAXON À PROTECTION DÉPARTEMENTALE	(taxon	SOUS-ESPÈCE
souligné	AUTRE TAXON REMARQUABLE (HORS TAXONS PROTÉGÉS) (liste rouge, livre rouge)	[taxon	VARIÉTÉ
taxon	TAXON DU GROUPE : taxon appartenant au groupe taxonomique indiqué au-dessus du trait vertical	{ taxon	FORME
		# taxon	CULTIVAR

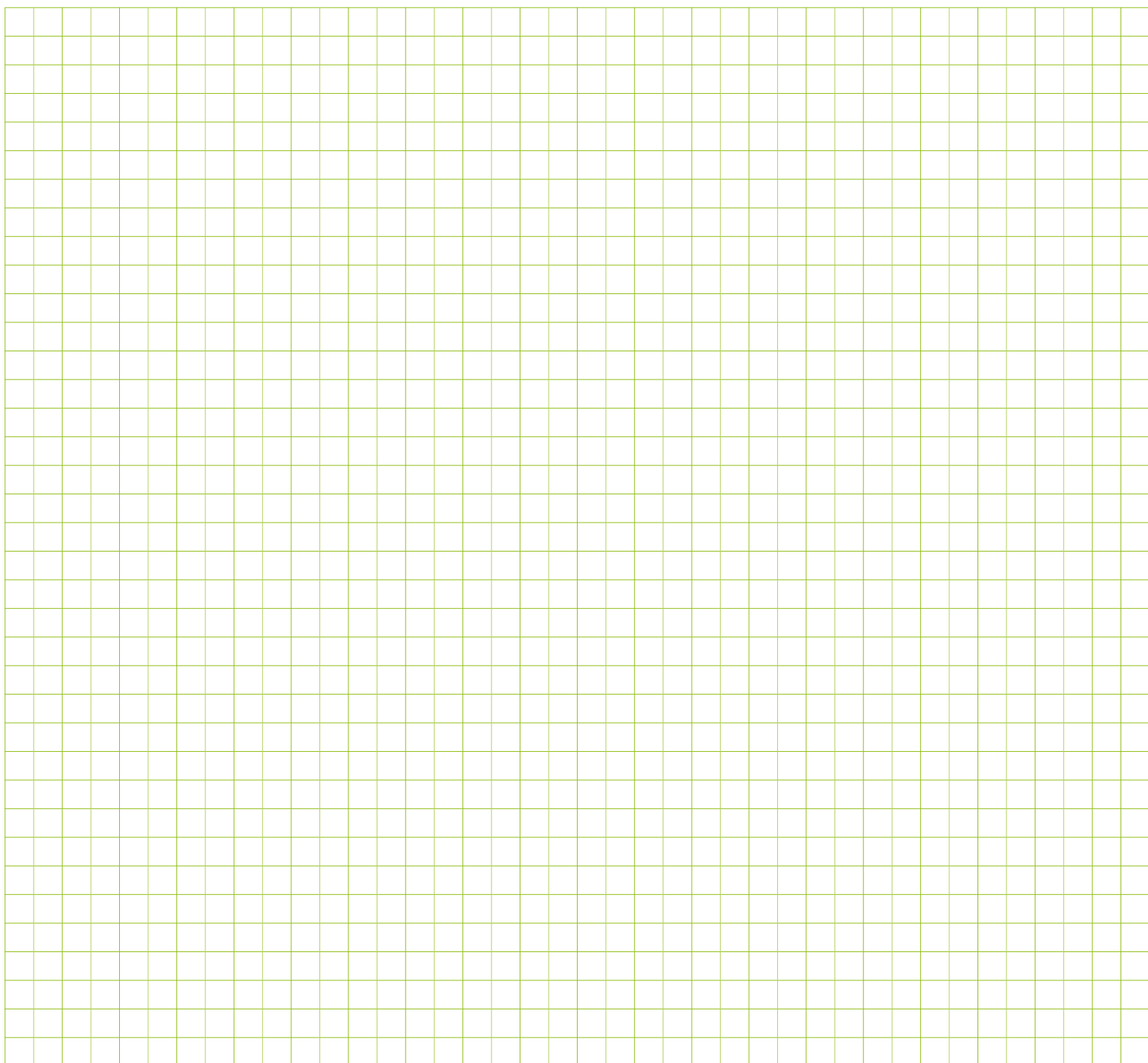
○ luzuloi	○ [willde	○ <i>verna</i>	○ <i>minor</i>	ONOBRY	ORTHIL	PERSIC	○ (abies	○ [vivipa	○ sativa
○ [luzulo	○ minima	○ <i>verna</i>	NARCIS	○ <i>arenari</i>	○ secunda	○ amphib	○ sitchen	○ anceps	○ tritub
○ multifl	○ monspe	○ <i>viscosa</i>	○ poeticu	○ <i>arenar</i>	OSMUND	○ hydrop	PICRIS	○ annua	POTAMO
○ [multi	○ <i>orbicul</i>	MIRABI	○ pseudon	○ <i>supina</i>	○ <i>regalis</i>	○ lapath	○ hieraci	○ [annua	○ <i>acutifo</i>
○ [palles	○ <i>orbicu</i>	○ <i>jalapa</i>	○ (major	○ viciifo	OXALIS	○ (britti	○ (hierac	○ [repta	○ <i>alpinus</i>
○ nivea	○ polymor	MISOPA	○ (pseudo	ONONIS	○ acetose	○ (lapath	○ (umbell	○ bulbosa	○ colorat
○ pilosa	○ rigidul	○ orontiu	NARDUS	○ <i>natrix</i>	○ cornicu	○ maculo	PILOSE	○ [bulbo	○ crispus
○ spicata	○ sativa	MOEHRI	○ stricta	○ pusilla	○ [atropu	○ minor	○ aurant	○ [vivip	○ friesii
○ (spicat	○ (falcat	○ <i>muscosa</i>	NARTHE	○ (pusill	○ [cornic	○ mitis	○ (aurant	○ chaixii	○ <i>gramine</i>
○ <i>sudetic</i>	○ (sativa	○ trinerv	○ ossifra	○ spinosa	○ <i>gr. fontan</i>	○ <i>orient</i>	○ lactuc	○ compres	○ <i>lucens</i>
○ sylvati	○ x(ambigu	MOENCH	NASTUR	○ (procur	○ <i>dilleni</i>	PETASI	○ (lactuc	○ nemoral	○ natans
○ (sieber	MELAMP	○ <i>erecta</i>	○ microph	○ (spinof	○ <i>fontana</i>	○ albus	○ offici	○ (nemora	○ gr. nodosu
○ (sylvat	○ arvens	MOLINI	○ officin	ONOPOR	OXYBAS	○ hybridu	○ pelete	○ palustr	○ <i>nodosus</i>
LYCHNI	○ (arvens	○ caerule	○ [offici	○ acanthi	○ glauca	○ <i>pyrenai</i>	○ (ligeri	○ pratens	○ xfluita
○ corona	○ (pseudu	○ (arundi	○ [siifol	OPHIQG	○ rubra	PETROR	○ (pelete	○ (angust	○ <i>obtusif</i>
○ flos-c	○ <i>catala</i>	○ (caerul	NEOTIN	○ [vulgatu	○ [interm	○ prolif	○ (periph	○ (irriga	○ <i>perfoli</i>
○ (flos-c	○ <i>crystal</i>	MONESE	○ [ustula	OPHRYS	○ [rubra	○ saxifra	○ saussu	○ (praten	○ polygon
LYCIUM	○ pratens	○ <i>uniflor</i>	NEOTINEA	○ apifera	PANICU	○ (saxifr	○ ziziana	○ (supina	○ praelon
○ <i>barbaru</i>	○ sylvati	MONOTR	○ ustulat	○ araneola	○ <i>capilla</i>	PEUCED	PILULA	○ trivial	○ gr. pusill
○ chinens	MELICA	○ hypopit	NEOTTI	○ aranifer	○ <i>dichoto</i>	○ gallicu	○ globuli	○ (semine	○ <i>berchto</i>
LYCOP'LA	○ ciliata	○ (hypoph	○ cordat	○ (aranif	○ <i>miliace</i>	○ officin	PIMPIN	○ (trivia	○ <i>pusillu</i>
○ inundat	○ (ciliat	○ (hypopi	○ nidus-a	○ fuciflo	○ <i>miliac</i>	○ [offici	○ major	PODOSP	○ <i>trichoi</i>
LYCOPS	○ (magnol	○ ovata	○ ovata	○ (fucifi	○ <i>rudera</i>	PHACEL	○ [rubra	○ lacini	POTENT
○ arvens	○ nutans	MONTIA	NEPETA	○ insecti	PAPAVE	○ tanacet	○ (major	○ (lacin	○ anglica
LYCOPU	○ uniflor	○ arvens	○ cataria	○ lutea	○ argemom	PHALAR	○ (saxifr	POLEMO	○ (anglic
○ europae	MELISS	○ fontana	○ xfaass	○ scolopa	○ (argemo	○ arundin	○ (saxifr	○ caerule	○ gr. argent
LYCOP'UM	○ officin	○ hallii	NESLIA	○ scolop	○ cambric	○ [arundi	PINGUI	POLYCN	○ argente
○ alpinum	MELITT	MURBEC	○ panicul	○ sulcata	○ dubium	○ (picta	○ grandif	○ <i>arvens</i>	○ neglect
○ annotin	○ melisso	○ pinnati	○ (thraci	OPUNTI	○ (lecoqi	○ canarie	○ (grandi	○ majus	○ aurea
○ (annoti	○ (meliss	MUSCAR	○ (macrorrh	○ gr. humifu	○ (hybridu	PHEDIM	○ lusitan	POLYGA	○ (aurea
○ <i>clavatu</i>	MENTHA	○ armenia	○ <i>hum x mac</i>	○ humifus	○ rhoeas	○ spurii	○ (vulgari	○ <i>calcare</i>	○ crantzj
○ (clavatu	○ aquatic	○ comosum	ORCHIS	○ (macrorrh	○ somnife	PHEGOP	○ (alpic	○ comosa	○ erecta
○ oellgaa	○ arvensi	○ neglect	○ anthropo	○ <i>hum x mac</i>	PAPAVER	○ connect	○ (vulga	○ serpyll	○ (erecta
○ tristac	○ longifo	MUTELL	○ mascula	OROSE	○ (somnif	PHELIP	○ connect	○ vulgari	○ fagine
LYSIMA	○ (longif	○ adonid	○ (mascul	○ nigrum	PARADI	○ arenar	PINUS	○ (vulgar	○ inaper
○ arvens	○ pulegiu	MYAGRU	○ militar	ORIGAN	○ liliast	○ inexepe	○ mugo	POLYG'NA	○ <i>indica</i>
○ (arvens	○ spicata	○ <i>perfoli</i>	○ pallens	○ vulgare	○ (purpur	○ odoratu	○ (mugo	○ multifl	○ norvegi
○ foemin	○ (glabra	MYOS'TIS	○ provinc	○ (vulgar	○ (purpu	○ vertici	○ (uncina	○ (recta	○ reptans
○ linum-	○ (spicat	○ alpestr	○ purpure	ORLAYA	○ <i>ramosa</i>	POLYG'NU	○ x(rotund	○ sterili	○ (reptans
○ mariti	○ (suaveol	○ arvensi	○ simia	○ grandif	PHILAD	○ avicula	○ (nigra	○ <i>spinu</i>	○ (sterili
○ minima	○ (suaveo	○ (arvens	OREOPT	○ <i>tricus</i>	○ coronar	○ (avicul	○ pinaste	○ <i>subin</i>	○ (spinu
○ nemorum	○ (suaveo	○ (umbrat	OREOSE	ORN'GAL	○ (depres	○ verna	○ strobus	○ <i>supin</i>	○ verna
○ nummula	○ xpiperi	○ balbisi	○ (limbosp	○ <i>luteus</i>	ORIGAN	POTERI	○ sylvest	○ (supin	○ (verna
○ punctat	○ xrotun	○ gr. disc	OREOPE	○ <i>luteus</i>	○ quadrif	○ sangui	PISUM	○ bellard	○ (sangu
○ tenell	○ xvertic	○ discolo	OREOSE	○ <i>luteus</i>	PARNAS	○ (balear	○ sativum	POLYP'DI	○ (sangu
○ thyrif	MENYAN	○ dubia	ORIGAN	○ <i>luteus</i>	○ palustr	○ (sangu	○ (biflor	○ <i>cambric</i>	PRENAN
○ vulgari	○ trifoli	○ ramosis	ORLAYA	○ <i>luteus</i>	○ (panicul	PRENAN	○ [arvens	○ <i>cambric</i>	○ purpure
LYTHRU	MERCUR	○ (ramosi	○ <i>tricus</i>	○ <i>luteus</i>	○ phleoid	PRIMUL	○ [sativu	○ <i>cambric</i>	○ (purpure
○ <i>hyssopi</i>	○ annua	○ gr. scor	ORN'PUS	○ <i>luteus</i>	○ pratens	○ elatior	○ (interje	○ <i>cambric</i>	○ (purpure
○ portula	○ perenni	○ laxa	OROBAN	○ <i>luteus</i>	PHRAGM	○ (elatior	○ vulgare	○ <i>cambric</i>	○ (purpure
○ salicar	MEUM	○ (cespit	○ alba	○ <i>luteus</i>	○ austral	PRIMUL	○ xmanton	○ <i>cambric</i>	○ (purpure
○ thymifo	○ athaman	○ martin	ODONTI	○ <i>luteus</i>	○ (austra	PRUNEL	PISUM	○ <i>cambric</i>	○ (purpure
MAIANT	MIBORA	○ nemoros	○ <i>luteus</i>	○ vernus	○ (chrysa	○ veris	○ sativum	○ <i>cambric</i>	○ (purpure
○ bifoliu	○ minima	○ scordio	○ <i>luteus</i>	○ (vernus	PASPAL	○ (veris	○ (biflor	○ <i>cambric</i>	○ (purpure
MALUS	MICRAN	○ secunda	○ <i>luteus</i>	○ (vernus	○ dilata	PRUNEL	○ [arvens	○ <i>cambric</i>	○ (purpure
○ domestic	○ hierac	○ stricta	○ <i>luteus</i>	OENANT	○ distich	○ (vulgar	○ [sativu	○ <i>cambric</i>	○ (purpure
○ sylvest	○ nivali	○ gr. sylv	○ <i>luteus</i>	○ aquatic	PASTIN	PHYSAL	○ [sativu	○ <i>cambric</i>	○ (purpure
MALVA	○ stella	○ decumbe	○ <i>luteus</i>	○ fistulo	○ sativa	○ lanceol	○ [sativu	○ <i>cambric</i>	○ (purpure
○ alcea	MICROP	○ (teresi	○ <i>luteus</i>	○ lachena	○ (sativa	○ major	○ [arvens	○ <i>cambric</i>	○ (purpure
○ moschat	○ tenellu	○ sylvati	○ <i>luteus</i>	○ peuced	○ (sativa	○ (major	○ [sativu	○ <i>cambric</i>	○ (purpure
○ neglect	○ {arist	MYOS'TON	○ <i>luteus</i>	○ pimpine	○ (urens	○ (pleios	○ [sativu	○ <i>cambric</i>	○ (purpure
○ setige	○ {tenel	○ aquatic	○ <i>luteus</i>	OENOTH	○ (spadic	○ maritim	○ [sativu	○ <i>cambric</i>	○ (purpure
○ sylvest	MICROT	○ <i>biennis</i>	○ <i>luteus</i>	○ <i>biennis</i>	PATZKE	○ (mariti	○ (sativu	○ <i>cambric</i>	○ (purpure
MARRUB	○ perfol	○ depres	○ <i>luteus</i>	○ depres	○ panicu	○ (serpen	○ (sativu	○ <i>cambric</i>	○ (purpure
○ vulgare	MILIUM	○ erstei	○ <i>luteus</i>	○ erstei	○ (panicu	○ media	○ (sativu	○ <i>cambric</i>	○ (purpure
MARSIL	○ effusum	○ glaziov	○ <i>luteus</i>	○ glaziov	○ (spadic	○ (media	○ (sativu	○ <i>cambric</i>	○ (purpure
○ quadrif	MINUAR	○ ligeri	○ <i>luteus</i>	○ ligeri	PEDICU	○ (media	○ (sativu	○ <i>cambric</i>	○ (purpure
MATRIC	○ hybrida	○ oehlke	○ <i>luteus</i>	○ oehlke	○ comosa	○ (semperv	○ (sativu	○ <i>cambric</i>	○ (purpure
○ chamom	○ (hybrid	○ pycnoc	○ <i>luteus</i>	○ pycnoc	○ foliosa	PLATA'RA	○ (sativu	○ <i>cambric</i>	○ (purpure
○ discoid	○ (laxa	○ subterm	○ <i>luteus</i>	○ subterm	○ palustr	○ bifolia	○ (sativu	○ <i>cambric</i>	○ (purpure
MEDICA	○ (tenuif	○ villosa	○ <i>luteus</i>	○ villosa	○ (palust	○ chloran	○ (sativu	○ <i>cambric</i>	○ (purpure
○ arabica	○ recurva	○ villos	○ <i>luteus</i>	○ villos	○ (spicatu	○ xhybri	○ (sativu	○ <i>cambric</i>	○ (purpure
○ lupulin	○ (conden	○ xfallax	○ <i>luteus</i>	○ xfallax	○ (alpest	○ xcanesc	○ (sativu	○ <i>cambric</i>	○ (purpure
○ [lupuli	○ rostrat		○ <i>luteus</i>		○ (occide	○ xgenero	○ (sativu	○ <i>cambric</i>	○ (purpure

surligné	TAXON PROTÉGÉ RÉGLEMENTAIREMENT (niveau européen, national ou régional)
surligné	TAXON À PROTECTION DÉPARTEMENTALE
souligné	AUTRE TAXON REMARQUABLE (liste rouge, livre rouge)
taxon	TAXON DU GROUPE : taxon appartenant au groupe taxonomique indiqué au-dessus du trait vertical

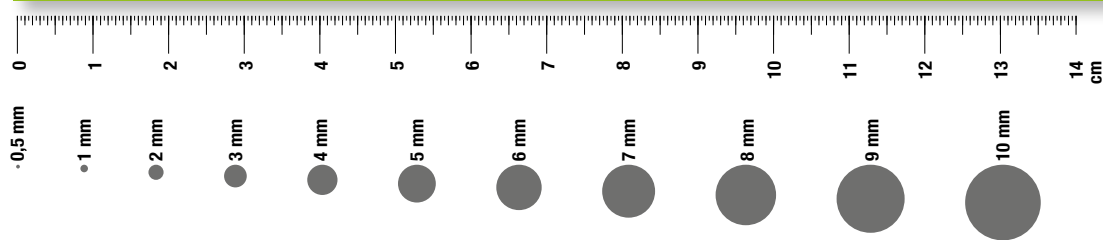
italique	TAXON EXOTIQUE ENVAHISSANT (avéré, potentiel, émergent...)
(taxon	SOUS-ESPÈCE
[taxon	VARIÉTÉ
{ taxon	FORME
# taxon	CULTIVAR

○ (domesti	○ circina	ROBINI	○ ser. Pallid	○ sclarea	○ (autumn	SETARI	SOLIDA	○ gramine	○ sect. Taraxa
○ (insiti	○ fluitan	○ <i>pseudoa</i>	○ ser. Radula	○ verbena	○ pyrena	○ italica	○ <i>canaden</i>	○ holoste	TAXUS
○ dulcis	○ hederac	RORIPP	○ ser. Rhamni	○ (verben	SCROPH	○ (<i>italic</i>	○ <i>gigante</i>	○ gr. media	○ baccata
○ <i>lauroce</i>	○ ololeuc	○ amphibi	○ ser. Spreng	○ vertici	○ <u>alpestr</u>	○ (pyncoc	○ virgaur	○ media	○ [baccat
○ mahaleb	○ <u>omniophy</u>	○ austria	○ ser. Sylvat	○ (vertic	○ aunicul	○ (viridi	○ (minuta	○ neglect	○ [fastig
○ padus	○ peltatu	○ palustr	○ ser. Vestit	SAMBUC	○ (auricu	○ (weinma	○ (virgaur	○ [neglec	TEESDA
○ [padus	○ (baudot	○ pyrena	○ ssect. Rubus	○ ebulus	○ canina	○ vertici	SONCHU	○ pallida	○ coronop
○ persica	○ (peltat	○ [pyrena	RUMEX	○ racemos	○ (canina	○ [ambigu	○ arvensi	○ nemorum	○ nudicau
○ <i>serotina</i>	○ penicil	○ sylvest	○ acetosa	○ (racemo	○ nodosa	○ vertic	○ (arvens	○ (montan	TEPHRO
○ spinosa	○ (penici	ROSA	○ (ace'osa	SAMOLU	SCUTEL	○ asper	○ asper	○ (nemoru	○ helenit
○ xfrutic	○ (pseudo	○ ssect.	○ acetose	○ <u>valeran</u>	○ galeric	SHERAR	○ (asper	STIPA	○ [arvern
PSEU'FU	○ <u>trichop</u>	Canina	○ (ace'lla	SANGUI	○ minor	○ arvensi	○ olerace	STREPT	TEUCRI
○ lutea	○ <u>tricho</u>	○ gr. canin	○ (pyrena	○ officin	SECALE	SILAUM	SORBUS	○ <u>amplexi</u>	○ botrys
PSEU'OR	○ bulbosu	○ caball	○ alpinu	SANICU	○ cereale	○ <u>silaus</u>	○ aria	STUCKE	○ chamaed
○ albida	○ [aleae	○ caesia	○ aquatic	○ europae	○ (cereal	○ [angu	○ aucupar	○ <u>pectin</u>	○ (chamae
○ (albida	○ [bulbos	○ canina	○ arifoli	SAPONA	SEDUM	○ [silau	○ (aucupa	SUCC'SA	○ (german
PSEU'TS	○ flammul	○ corymbi	○ conglom	○ ocymoid	○ acre	SILENE	○ <u>chamaem</u>	○ pratens	○ <u>montanu</u>
○ menzies	○ [flammu	○ desegl	○ crispus	○ (ocymoi	○ album	○ baccif	○ <u>mougeot</u>	SWERTI	○ <u>scordiu</u>
○ (menzie	○ [major	○ obtusif	○ [crispu	○ officin	○ ciliata	○ conica	○ tormina	○ <u>perenni</u>	○ scorodo
PSEU'TU	○ laterif	○ dumalis	○ longifo	SAXIFR	○ dioica	○ dioica	○ xthuri	SYMPHO	THALI'UM
○ turrif	○ lingua	○ squarro	○ (maritim	○ androsa	○ gallica	○ (dioica	SORGHU	○ <i>albus</i>	○ <u>aquileg</u>
PTERID	○ <u>monspel</u>	○ stylosa	○ obtusif	○ bryoide	○ (alba	○ (diocia	○ <i>halepen</i>	○ <i>laeviga</i>	○ [<u>aquile</u>
○ aquilin	○ nodifilo	○ vosagia	○ (obtusif	○ fragoso	○ noctifl	○ (italica	SPARGA	SYMPH'UM	○ [<u>flavum</u>
PUCCIN	○ <u>paludos</u>	○ gr. pouzi	○ (transi	○ lamott	○ nocturn	○ latifol	○ <u>emersum</u>	○ <i>no-ang</i>	○ (pratens
○ distans	○ parvifl	○ pouzini	○ palustr	○ opposit	○ (erectum	○ (alba	○ (<u>emersu</u>	○ <i>gr. no-bel</i>	○ (saxati
○ (distan	○ (parvif	○ ssect. Rubigi	○ <i>patient</i>	○ panicul	○ (neglec	○ (erectu	○ erectum	○ [<i>lanceo</i>	○ (<u>simplex</u>
○ fontan	○ platani	○ gr. agres	○ pulcher	○ (sanguin	○ nutans	○ (neglec	○ (erectu	○ [<i>no-bel</i>	○ [<u>simple</u>
○ fascic	○ repens	○ agresti	○ (pulche	○ thyrif	○ (nutans	○ (neglec	○ (neglec	○ [<i>xsalig</i>	THELYP
○ (fascic	○ sardous	○ ellipti	○ sanguin	○ (rotund	○ (ofites	○ (neglec	○ (neglec	○ [<i>xversic</i>	○ palustr
○ festuc	○ scelera	○ gr. rubig	○ thyrif	○ (rotund	○ (<u>saxifra</u>	○ (neglec	SPARTIU	SYMPHY	○ <u>thasiu</u>
○ (lagasc	○ (sceler	○ micrant	○ xpraten	○ tridact	○ villosu	○ (vulgar	○ junceum	○ gr. aspe	THESIU
PULICA	○ tuberos	○ rubigin	RUSCUS	SCABIO	○ villos	○ xhampea	SPERG'LA	○ (asperum	○ alpinum
○ dysente	RAPHAN	○ ssect. Rubri	○ aculeat	○ columba	SELAGI	SPER'LA	○ arvensi	○ [<i>xupland</i>	○ [alpinu
○ vulgari	○ raphani	○ gr. ferru	SAGINA	○ (columb	○ selagin	○ arvensi	○ (arvens	○ officin	○ humifus
PULMON	○ (raphan	○ gr. margi	○ apetala	SCANDI	SELINU	○ marina	○ officin	○ (officin	○ (divari
○ affinis	RAPIST	○ jundz	○ (apetala	○ <u>pecten-</u>	○ <u>carvifo</u>	○ media	○ (officin	○ tuberos	○ (<u>humifui</u>
○ gr. long	○ rugosum	○ trachyp	○ (erecta	○ (<u>pecten</u>	SEMPER	○ morison	○ pentand	SYRING	○ pyrenai
○ angusti	○ (orient	○ ssect. Vestit	○ procumb	SCHEDO	○ arachno	○ (morison	○ rubra	○ vulgari	○ (pyrena
○ longifo	○ (rugosu	○ gr. tomen	○ (muscos	○ arundi	○ [arachn	○ (pentand	TANACE	○ <u>corymbu</u>	THLASP
○ (longif	○ (rugosu	○ sherard	○ (procum	○ (arundi	○ [toment	○ (rubra	○ parthen	○ (parthe	○ alliace
○ montana	RESEDA	○ tomento	○ (<u>saginoi</u>	○ gigant	○ (arvern	○ (<u>segeta</u>	○ (vulgare	○ (vulgare	○ arvense
○ (montan	○ lutea	○ gr. villos	○ (<u>sagino</u>	○ (interr	○ (tector	SINAPI	SPIRAE	○ (vulgare	THYMEL
PYROLA	○ (luteola	○ mollis	○ subulat	○ praten	SENECI	○ alba	○ alba	○ (vulgare	○ (<u>passeri</u>
○ <u>chloran</u>	○ phyteum	○ villosa	○ [subula	SCHEUC	○ cacalia	○ <u>amomum</u>	○ (<i>gr. dougla</i>	TARAXA	○ (<u>passer</u>
○ minor	○ [phyteu	○ sect. Gallic	SAGITT	○ palustr	○ doronic	○ (<u>segetu</u>	○ [<i>dougla</i>	○ sect. Celtic	THYMUS
○ <u>rotundi</u>	REYNOU	○ gallica	○ sagitti	SCHOEN	○ (doroni	SISYM'LA	○ [<i>salicif</i>	○ nordste	○ gr. polytr
○ [<u>rotund</u>	○ <i>gr. japoni</i>	○ spinos	SALIX	○ gerard	○ (<u>aspera</u>	○ <u>aspera</u>	○ [<i>xbillar</i>	○ drucei	○ drucei
PYRUS	○ [<i>japonic</i>	○ (spinosa	○ alba	SCHO'PLE	○ (<u>aspera</u>	○ (<u>aspera</u>	○ [<i>xpseud</i>	○ longica	○ longica
○ communi	○ [<i>sachali</i>	○ sect. Rosa	○ [vitell	○ lacustr	○ (<u>obovat</u>	SISYM'UM	○ [<i>hyper</i>	○ polytr	○ polytr
○ (commun	○ [<i>xbohem</i>	○ penduli	○ aurita	○ bicolor	SPIRAN	○ (austria	○ (<u>obovat</u>	○ invoca	○ pulegio
○ (pyrast	RHAMNU	○ [<i>rugosa</i>	○ (saginoi	○ (<u>mucrona</u>	○ aestina	○ (arvens	SPIROD	○ [<i>laci'loi</i>	○ [<i>pulegi</i>
○ cordata	○ alpina	○ sect. Synst	○ (<u>sagino</u>	○ (<u>taberna</u>	○ (spirali	○ (arvern	○ (vulgare	○ [<i>laci'lum</i>	○ [<i>pulegi</i>
○ salviif	○ (alpina	○ arvensi	○ subulat	SCILLA	○ (chrysa	○ (officin	SPORU	○ navarre	○ [<i>vestit</i>
QUERCU	○ cathart	ROSTRA	○ (interr	○ bifolia	○ (irio	○ (officin	○ polytr	○ oxonien	THYSSELI
○ ilex	RHAPON	○ cristat	○ atroci	SCIRPO	○ (vulgar	○ (officin	○ (polytr	○ rubicun	○ [<u>palustre</u>
○ petraea	○ conife	RUBIA	○ cinerea	○ holosch	SERAPI	○ (officin	SPORU	○ (polytr	TILIA
○ (petrae	○ (<u>conif</u>	○ peregri	○ elaeagn	○ (holosc	○ [<u>lingua</u>	○ (officin	○ (<i>indicu</i>	○ sect. Hamat	○ cordata
○ pubesc	RHINAN	○ (peregr	○ fragili	SCIRPU	○ (<u>omerac</u>	○ (officin	○ (<i>hamif</i>	○ [<i>hamat'l</i>	○ platyph
○ pyrenai	○ alector	○ tinctor	○ hastata	SCLERA	SERRAT	○ (officin	○ (<i>hamif</i>	○ [<i>hamif</i>	○ xeurop
○ robur	○ angusti	RUBRIV	○ herbace	○ annuus	○ tinctor	SIUM	STACHY	○ [<i>macula</i>	TOLPIS
○ (<i>rubra</i>	○ (angust	○ (<i>polyst</i>	○ lapponu	○ (annuus	○ (montic	○ latifol	○ alpina	○ [<i>mediterr</i>	○ (<u>umbell</u>
○ xkerner	○ minor	RUBUS	○ pentand	○ (polyca	○ (tincto	SOLANU	○ annua	○ pseudom	○ (<i>cordata</i>
○ xrosace	○ pumilus	○ caesius	○ purpure	○ (perenni	SESAMO	○ (dulcam	○ arvensi	○ punice	TORDYL
○ xstreim	RHUS	○ (repens	○ repens	○ (perenn	○ (<u>purpura</u>	○ (lycope	○ byzanti	○ sect. Obliq	○ maximum
RADIOL	○ typhin	○ triandr	○ (repens	○ (uncinat	○ (<u>purpur</u>	○ (nigrum	○ (<u>germani</u>	○ [<i>cenabe</i>	TORILI
○ linoide	RHYNCH	○ viminal	○ (repens	SCLERO	○ (<u>pygmaea</u>	○ (nigrum	○ (<u>german</u>	○ [<i>pyrenai</i>	○ africa
RANUNC	○ alba	○ xmultin	○ (repens	○ (<i>dura</i>	○ (<u>sesamo</u>	○ (schult	○ (<u>heracle</u>	○ [<i>ciliatu</i>	○ [<i>africa</i>
○ aconiti	○ fusca	○ xruben	○ (repens	SCORZ'A	SESELI	○ (tuberos	○ palustr	○ sect. Obova	○ [<i>africa</i>
○ acris	RIBES	SALVIA	○ (repens	○ humilis	○ (<u>annuum</u>	○ villos	○ recta	○ [<i>obovatu</i>	○ [<i>hetero</i>
○ (acris	○ alpinum	○ aethiop	○ (repens	SCORZ'O	○ (<u>annuum</u>	○ (miniat	○ (recta	○ [<i>sect. Palust</i>	○ (arvens
○ (friesi	○ nigrum	○ officin	○ (repens	○ autumn	○ (<u>montanu</u>	○ (villos	○ (sylvati	○ [<i>ciliare</i>	○ [<i>anthri</i>
○ arvensi	○ (nigrum	○ officin	○ (repens	SCORZ'U	○ (<u>montan</u>	SOLDAN	○ (villos	○ [<i>hollan</i>	○ [<i>arvens</i>
○ auricom	○ (nigrum	○ officin	○ (repens	○ (<u>montan</u>	○ alpina	○ alpina	○ (villos	○ [<i>palust</i>	○ (neglect
○ subg. Batrac	○ (nigrum	○ officin	○ (repens	○ (<u>montan</u>	○ (<u>alpina</u>	STELLA	○ (villos	○ [<i>udum</i>	○ japonic
○ aquatil	○ (nigrum	○ officin	○ (repens	○ (<u>montan</u>	○ (<u>alpina</u>	○ alsine	○ (villos	○ [<i>sect. Piesis</i>	○ (<i>japoni</i>
	○ (nigrum	○ officin	○ (repens				○ (villos	○ [<i>bessara</i>	

surligné	TAXON PROTÉGÉ RÉGLEMENTAIRE (niveau européen, national ou régional)	<i>italique</i>	TAXON EXOTIQUE ENVAHISSANT (avéré, potentiel, émergent...)
surligné	TAXON À PROTECTION DÉPARTEMENTALE	(taxon	SOUS-ESPÈCE
souligné	AUTRE TAXON REMARQUABLE (HORS TAXONS PROTÉGÉS) (liste rouge, livre rouge)	[taxon	VARIÉTÉ
taxon	TAXON DU GROUPE : taxon appartenant au groupe taxonomique indiqué au-dessus du trait vertical	{ taxon	FORME
		# taxon	CULTIVAR



RÈGLES DE MESURE



Conservatoire botanique national du Massif central

Siège
 Le Bourg
 43230 CHAVANIAC-LAFAYETTE
 Téléphone : 04 71 77 55 65
 Télécopie : 04 71 77 55 74
 Courriel : conservatoire.siege@cbnmc.fr
 Site Internet : www.cbnmc.fr

Antenne Limousin
 38 bis, avenue de la Libération
 87000 LIMOGES
 Téléphone : 05 55 77 51 47

Antenne Rhône-Alpes
 Maison du Parc
 Moulin de Virieu - 2, rue Benay
 42410 PÉLUSSIN
 Téléphone : 04 74 59 17 93